

Public health in Leicestershire

Dr Peter Marks

Kevan Liles

The new health system

NHS Commissioning Board

- Primary care
 - GPs
 - Dentists
 - Pharmacists
 - Optometrists
- Specialised commissioning
- Prison health
- Immunisation
- Public Health 0-5yrs
- Screening

Clinical Commissioning Groups

- Most commissioning of healthcare services locally

Local government

- Health and Wellbeing Board
- Public health
 - Health improvement
 - Health protection
 - Healthcare PH
- JSNA and Joint health and Wellbeing Strategy (with CCGs)

Public Health England

- Health Protection
- Emergency Preparedness
- National Treatment Agency functions
- Evidence and information
- Cancer registries
- Advocacy
- National campaigns

Health and Wellbeing Board

LA prescribed services

- Commissioning sexual health services (except HIV treatment, sterilisation and abortions)
- Health protection (duty on DPH to ensure plans in place to protect health of population)
- PH advice to NHS commissioners
- National Child Measurement Programme
- NHS health checks
- Elements of child health programme

Other LA responsibilities

- Tobacco control
- Alcohol and drug misuse services
- Obesity and community nutrition
- Physical activity
- Public mental health
- Dental PH (but specialist expertise with PH England)
- Accident prevention
- Interventions to prevent and reduce birth defects
- Behaviour and lifestyle campaigns to prevent cancer and long term conditions
- Workplace health
- Support and challenge for NHS delivered immunisation programmes
- Reduction of excess winter deaths
- Promotion of community safety, violence protection
- Tackling social exclusion

PH Outcomes Framework

- Two high level outcomes
 - increased healthy life expectancy
 - reduced differences in life expectancy and healthy life expectancy between communities
- 66 indicators in four domains
 - improving the wider determinants of health
 - health improvement
 - health protection
 - healthcare public health and preventing premature mortality

Health and Wellbeing Board



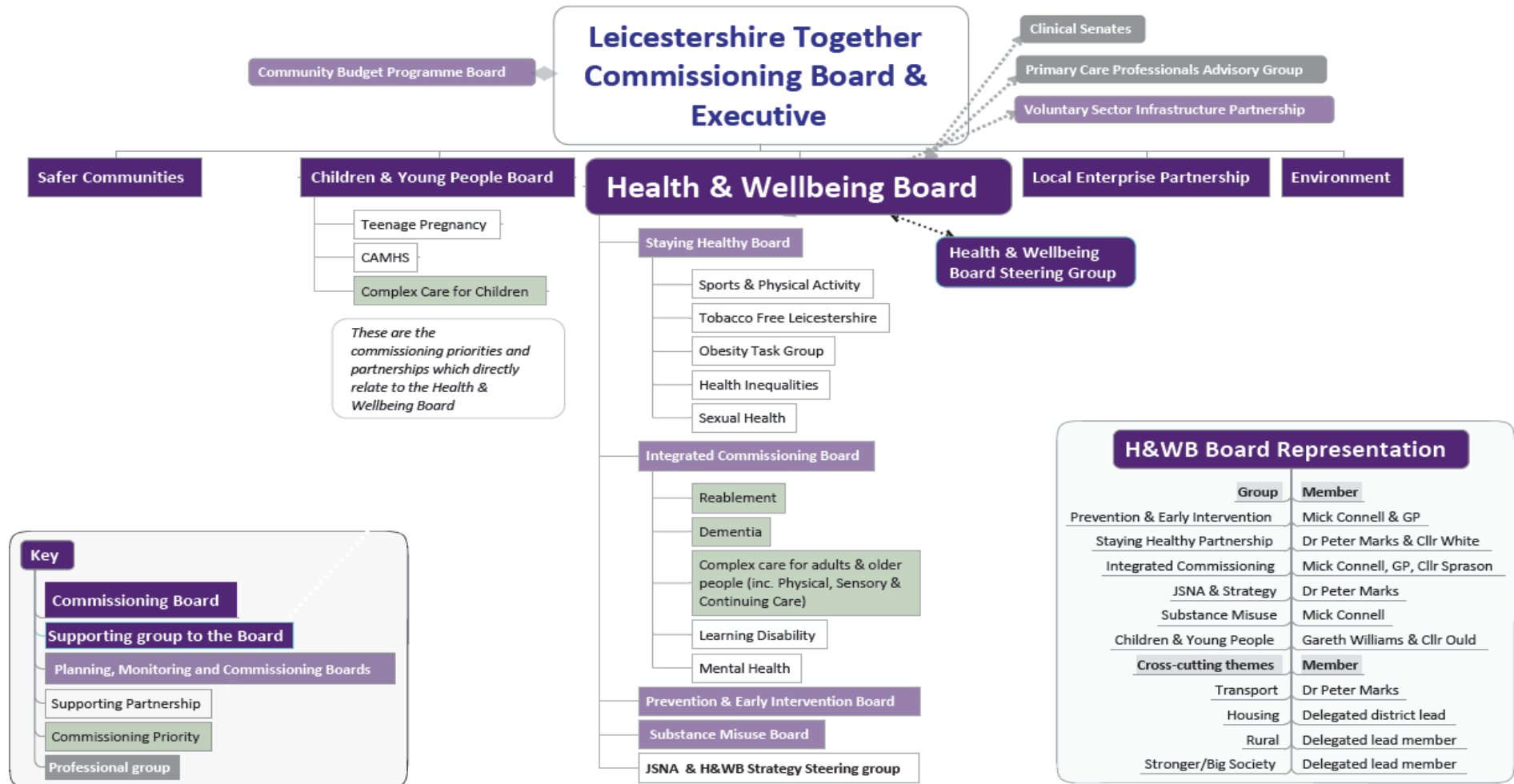
Health and Wellbeing Board roles

- Promote integration and partnership working between the NHS, Social Care, Public Health and other local services; and
- Improve local democratic accountability
- Specific tasks
 - Joint Strategic needs Assessment (JSNA)
 - Health and Wellbeing Strategy (HWBS)

Membership

| Statutory | Leicestershire shadow |
|-------------------------------|--|
| Councillor | 3 County, 2 District |
| Director of Public Health | Director of Public Health |
| Director of Adult Social Care | Director of Adults and Communities |
| Director of Children Services | Director of Children and Young People's Services |
| HealthWatch | LINKs x2 |
| NHS Commissioning Board | PCT Cluster |
| CCG | CCGs: GPs x2, managers x2 |
| | Police |
| | |

DIAGRAM SHOWING HEALTH AND WELLBEING BOARD SUB STRUCTURE AND KEY RELATIONSHIPS



Many of the Boards and other groups represented on this diagram have working relationships.

2012 JSNA Summary

ADDING QUALITY AND YEARS TO LIFE



Housing Partnership

Environment Board

Leicester and Leicestershire Economic Partnership

etc

Joint health and wellbeing strategy

- **Priorities:**
 - Getting it right from childhood
 - Managing the shift to early intervention and prevention
 - Supporting the ageing population
 - Improving mental health and wellbeing
- **Cross-cutting theme**
 - Tackling the determinants of health by influencing other boards

VCS partnership with Public Health

- Strategic Policy Influence
- Sharing Outcomes
- Directly delivering public health priorities



