



Rachel Quinn
Chief Executive

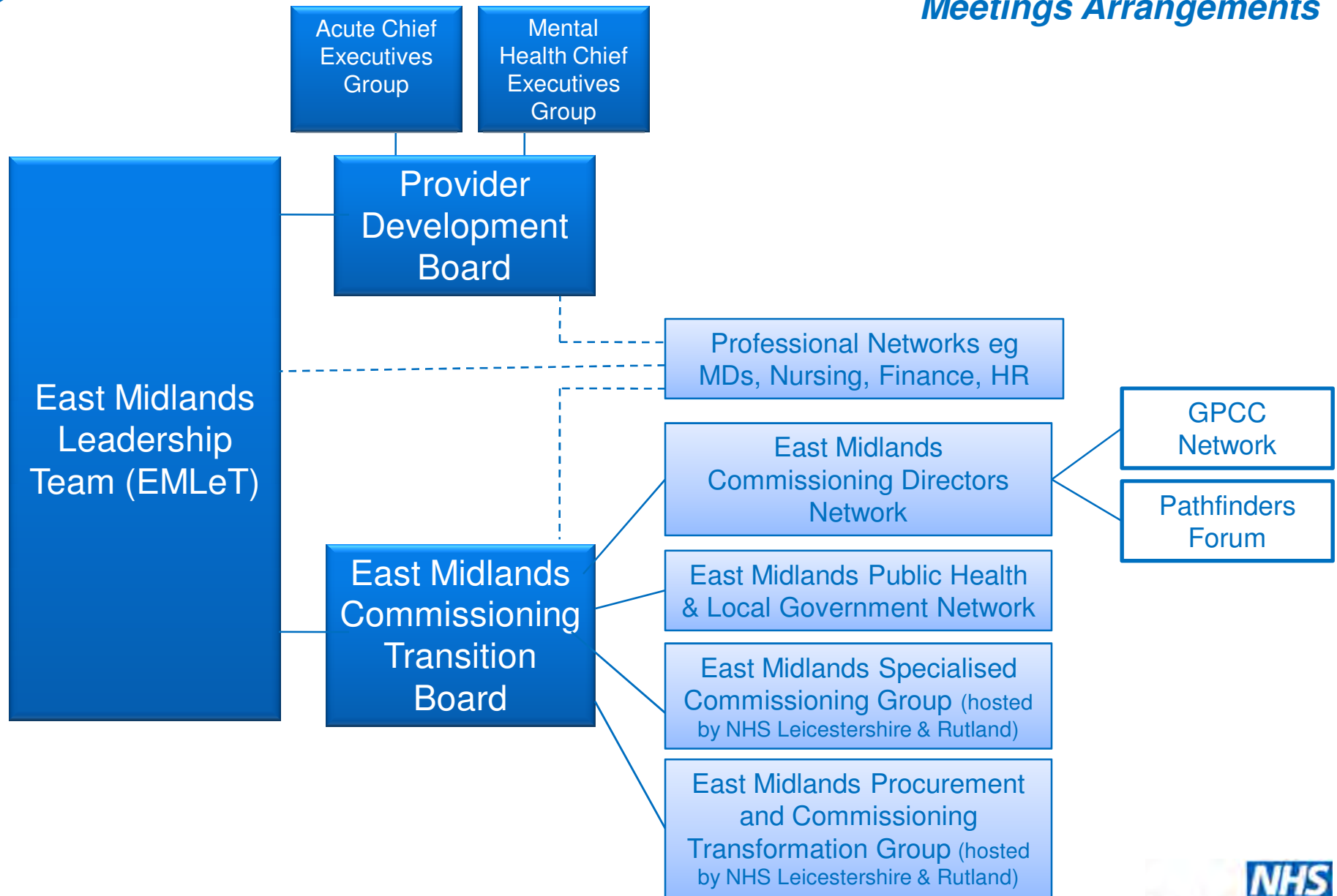
Aims and Objectives

Coordination of actions to address regional health inequality and social care issues, and develop and engage in strategic partnerships

- Engagement
- Communication
- Representation

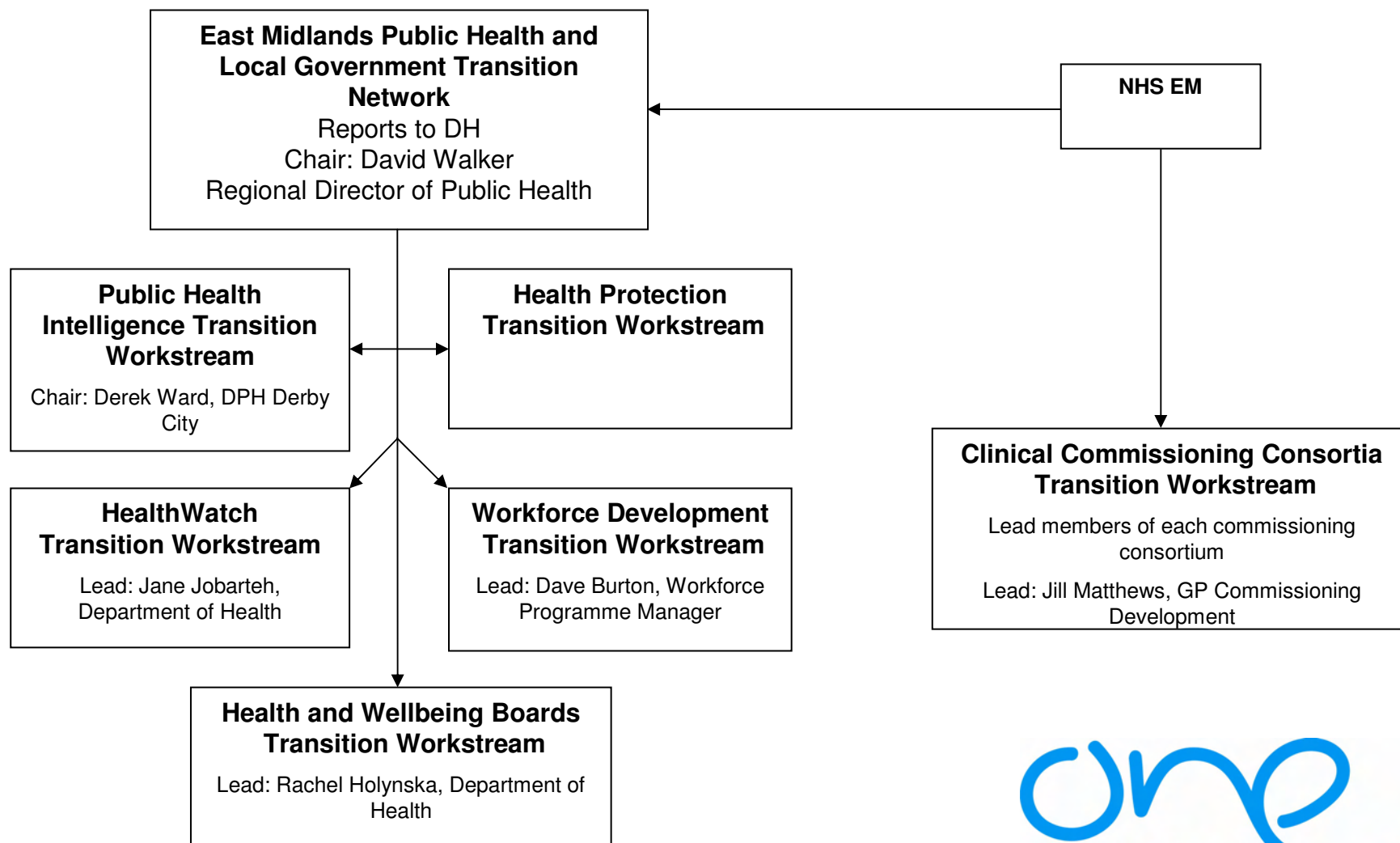


System Management Meetings Arrangements



Overview of East Midlands Health Transition Structures

July 2011



Successes

- Strategic partner with Department of Health
- Coordination of regional dialogue
 - Health and Public Health White Papers
 - Listening event
- Tracking transition structures as they develop
- Informing the local - communications
- Models for engagement with H&WBBs
- Business case for engagement with GP consortia
- Role of infrastructure tool
- Identifying and sharing best practice
- Relationships with ADASS



Forward priorities

- Building relationships with ADASS
- Personal budgets:
 - Transitional contracting arrangements
 - Brokerage services
 - Access to advocacy
- Best practice in commissioning
- Shaping relationship between VCS and HealthWatch
- Workforce development planning
- Supporting local networks





one
East Midlands

Getting voices heard,
shaping change



one
East Midlands
Getting voices heard,
shaping change





Thank you

office@one-em.org.uk

www.oneeastmidlands.org.uk

0115 934 8471

