



Economic Data for Lincolnshire

James Baty

Research and Information Team
Lincolnshire County Council



Introduction

- Where Lincolnshire stands
- The recession and recovery
- The LRO – accessing data



Usual Economic Stats

- Employment/Unemployment
- Business Birth Rates
- Vat registrations
- GDP/GVA
- Statistics linked to deprivation – housing/crime/education



Unemployment

Jobseekers Allowance Claimants (for now)

Three main measures;

- Overall claimants
- Claimants aged 16-24
- Claimants claiming for over 6 months

Seasonality in the labour market



Jobseekers Allowance claimant rate

ONS, August 2014



2.2%



Employment by Industry - Agriculture

ONS Business Register and Employment Survey (with DEFRA agricultural census), 2012



6%



Employment by Industry - Manufacturing

ONS Business Register and Employment Survey (with DEFRA agricultural census), 2012



13%



Employment by selected industry

ONS Business Register and Employment Survey (with DEFRA agricultural census), 2012

Industry	Lincolnshire (%)	England (%)
Agriculture and Fishing	6	2
Banking, Finance and Insurance	14	21
Distribution, Hotels and Restaurants	26	23
Manufacturing	13	8
Public Administration, Education and Health	28	27



Skills – Level 3+

ONS Census 2011

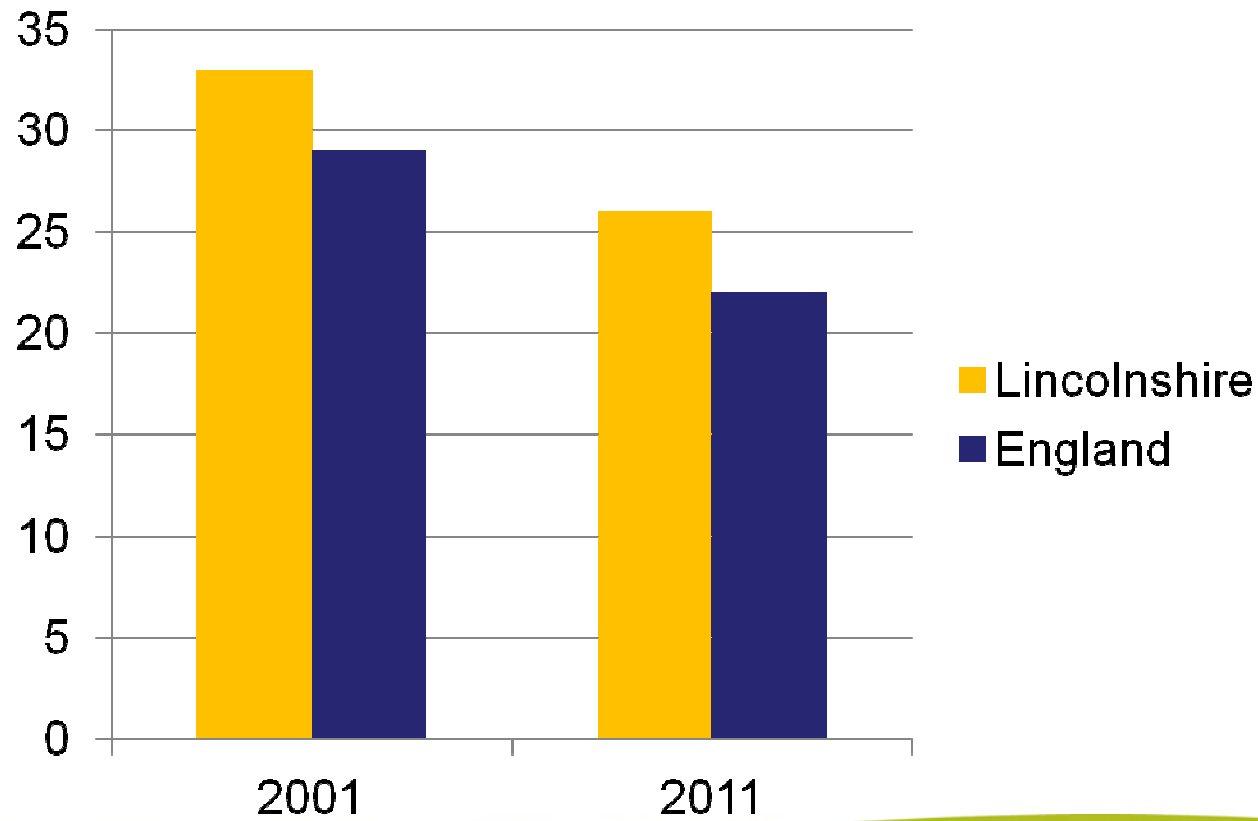


34%



Skills – No Qualifications (% of working age population)

ONS Census 2001, 2011





Gross Value Added (GVA)

What is GVA?

A measure of the increase in the value of the economy due to the production of goods and services.

How is GVA measured?

GVA is measured at current basic prices, which include the effects of inflation, excluding taxes (less subsidies) on products (for example Value Added Tax).



Gross Value Added Per Head (2012)



£21,700



Local Labour Market Indicators

Source: Annual Population Survey 2013/14

Indicator	No.	%	England (%)
Working age people	429,100		
Working age people in employment	316,300	74	72
Employees	275,600	87	85
Self employed	59,800	13	15
Economically inactive	92,400	22	23
Economically inactive who want a job	22,200	24	24
Economically inactive who do not want a job	70,200	76	76



VAT registrations

Source: Interdepartmental Business Register Snapshot, ONS

24,745 VAT registered businesses in Lincolnshire in 2013

Size of Business		Proportion
Micro	0-9	88%
Small	10-49	10%
Medium	50-249	2%
Large	250+	<0.1%



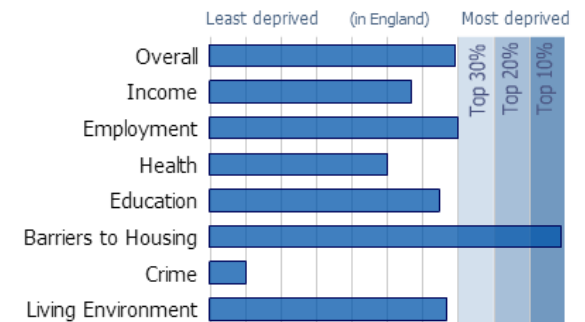
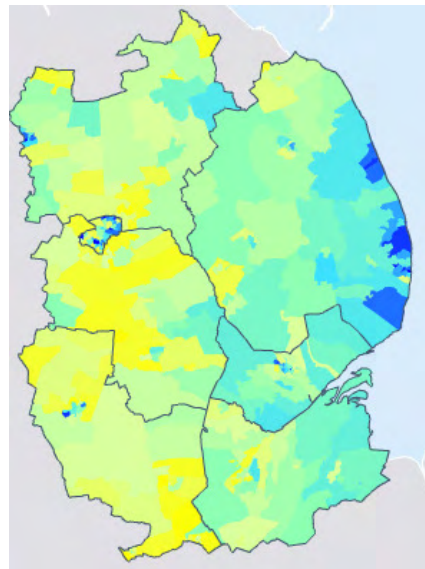
Business Counts (Local Units) - Not for profit organisations

ONS Inter-departmental Business Register Snapshot, 2013

4% of businesses in Lincolnshire are classified as not for profit organisations

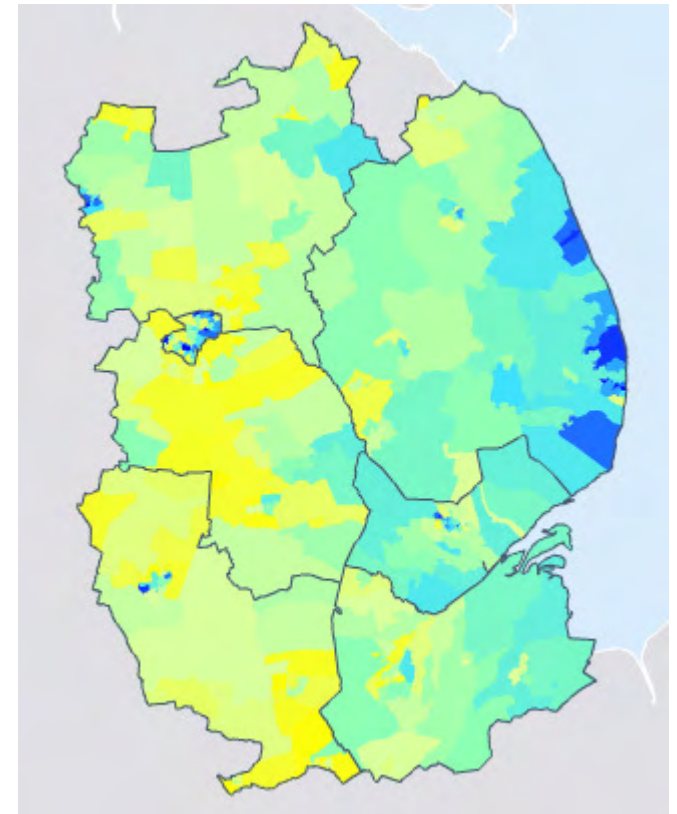
Deprivation

- A relative measure of deprivation at a small area across England
- Income
- Employment
- Health and disability
- Education
- Crime
- Barriers to housing
- Living Environment



Deprivation

- Approx 4% of Lincolnshire's population lives in 10% most deprived areas of England
- Approx 8% of Lincolnshire's population lives in 10% least deprived areas of England





Lincolnshire historically.....

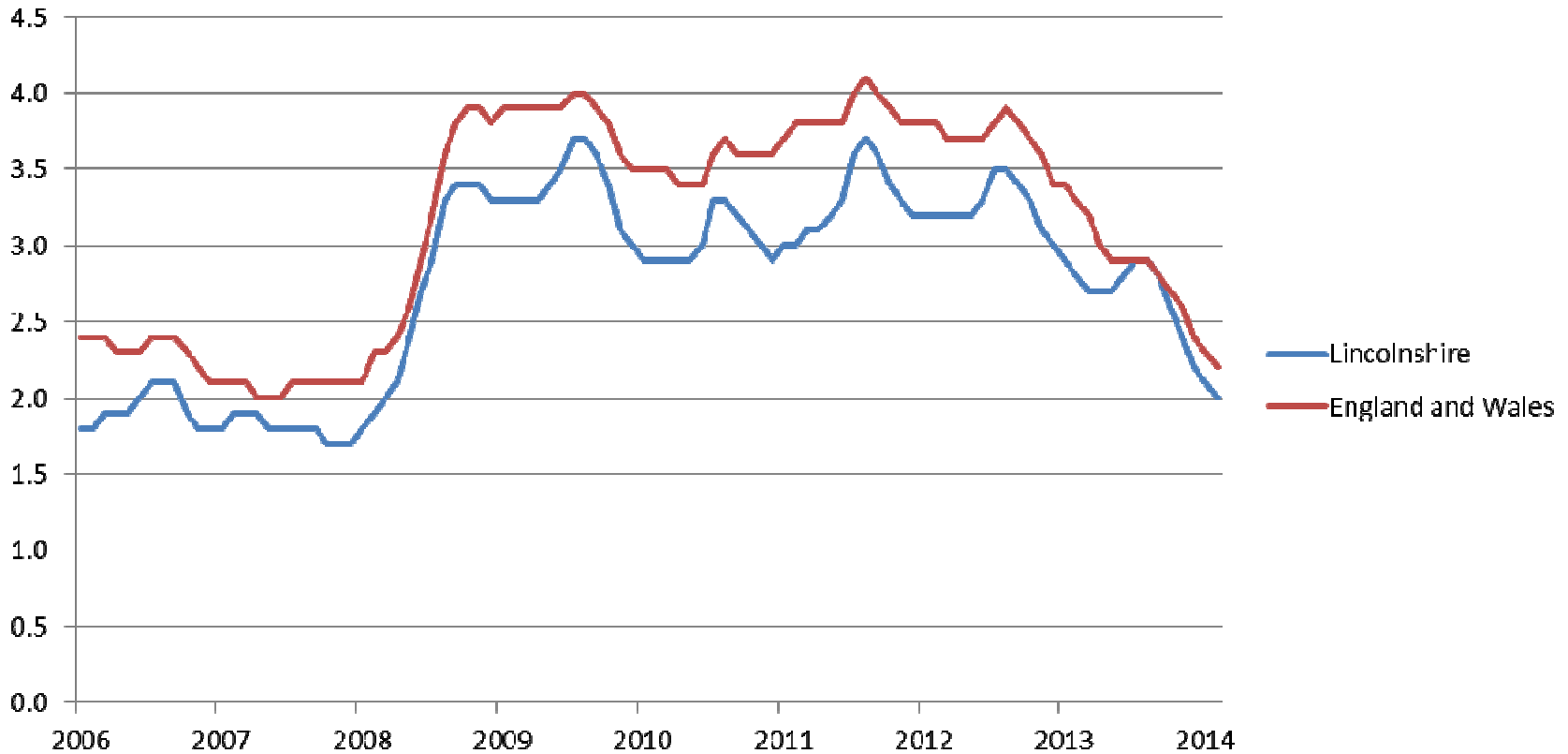
- Traditionally seen as a low skilled, low wage economy
- Low GVA
- Traditional industries; agri-food, visitor economy, manufacturing
- Ageing population
- Lower wages
- Lower house prices
- Small Businesses
- Lower Unemployment



The Recession.....and recovery

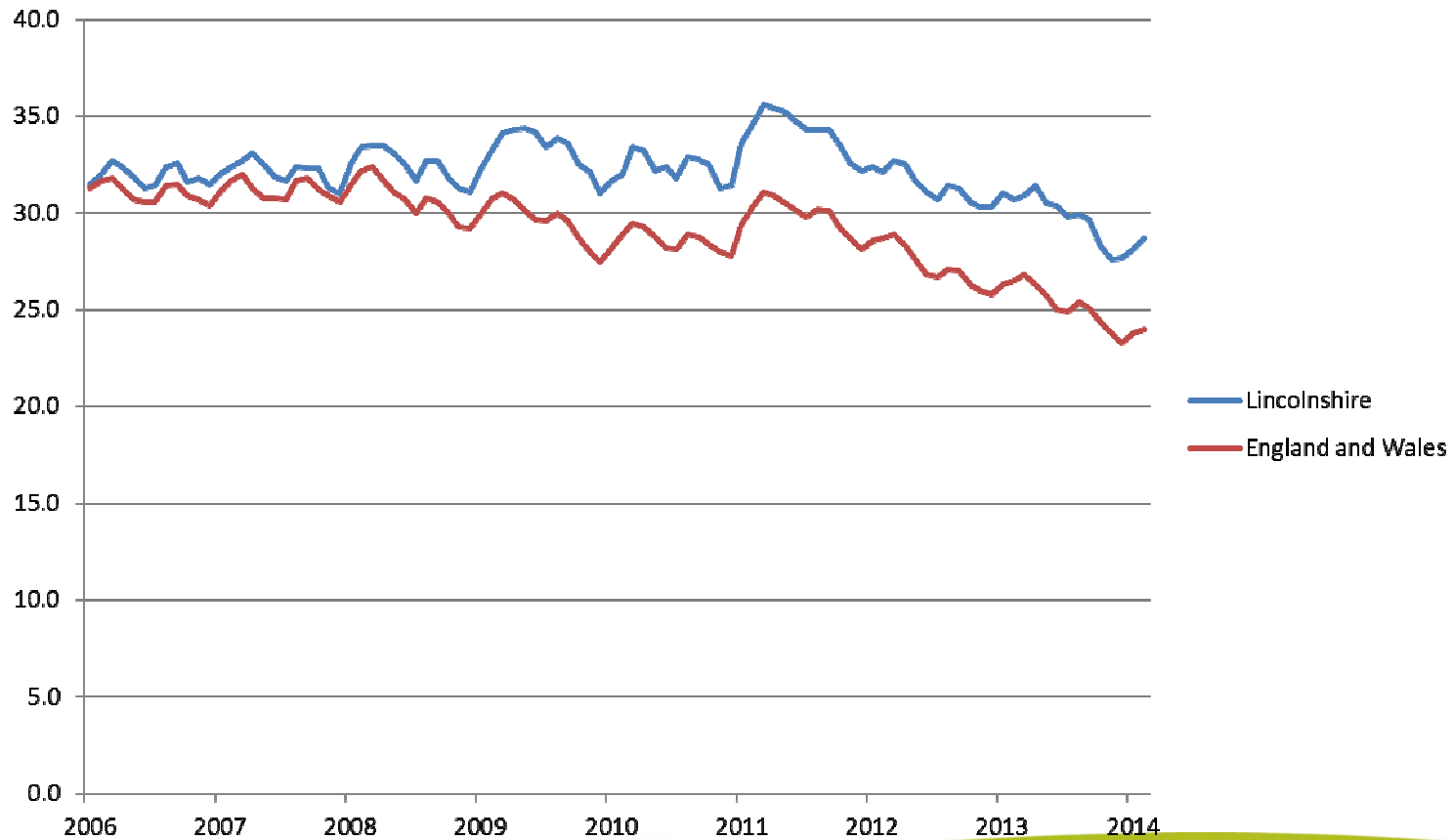


Unemployment – all claimants



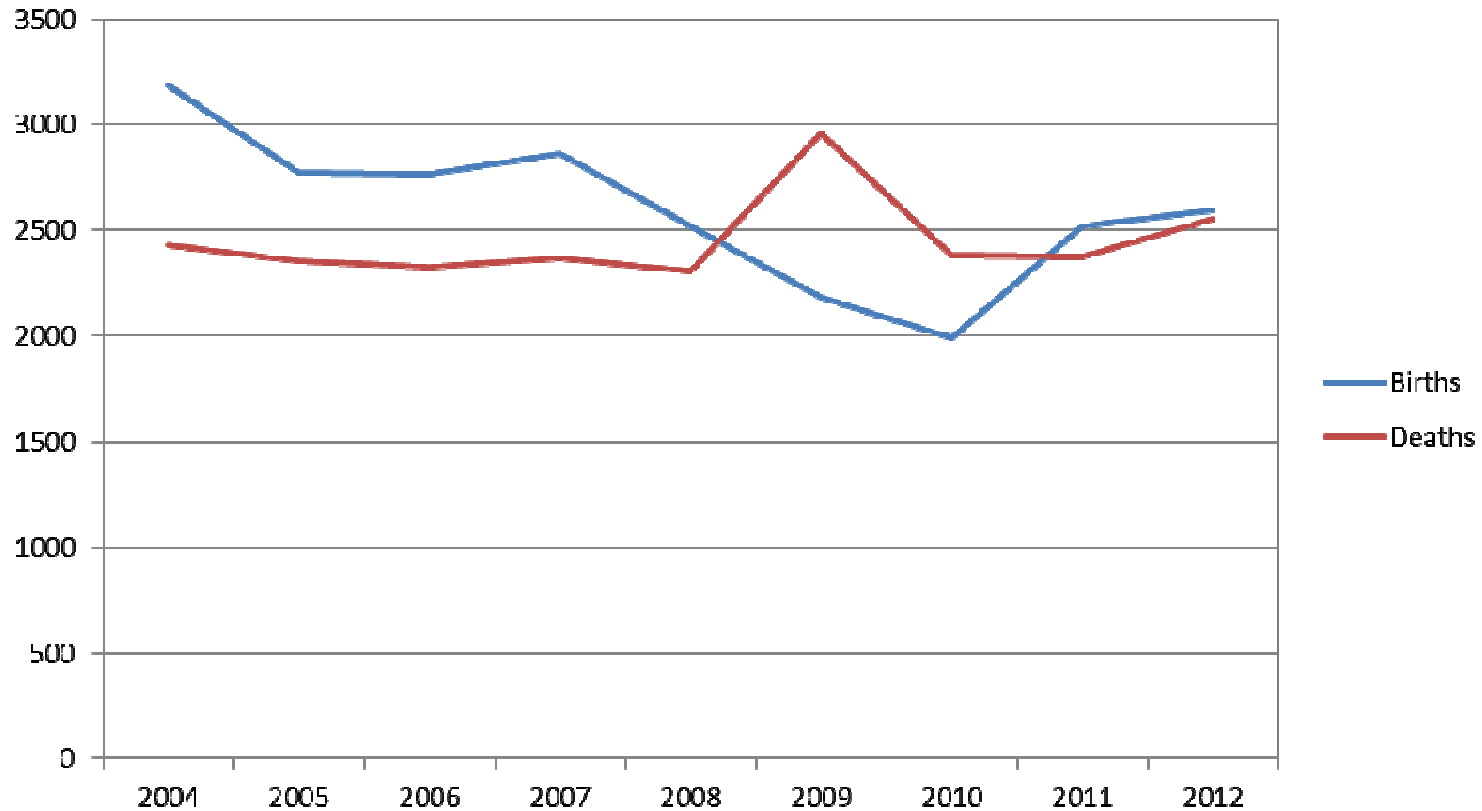


Unemployment – youth as a proportion of all



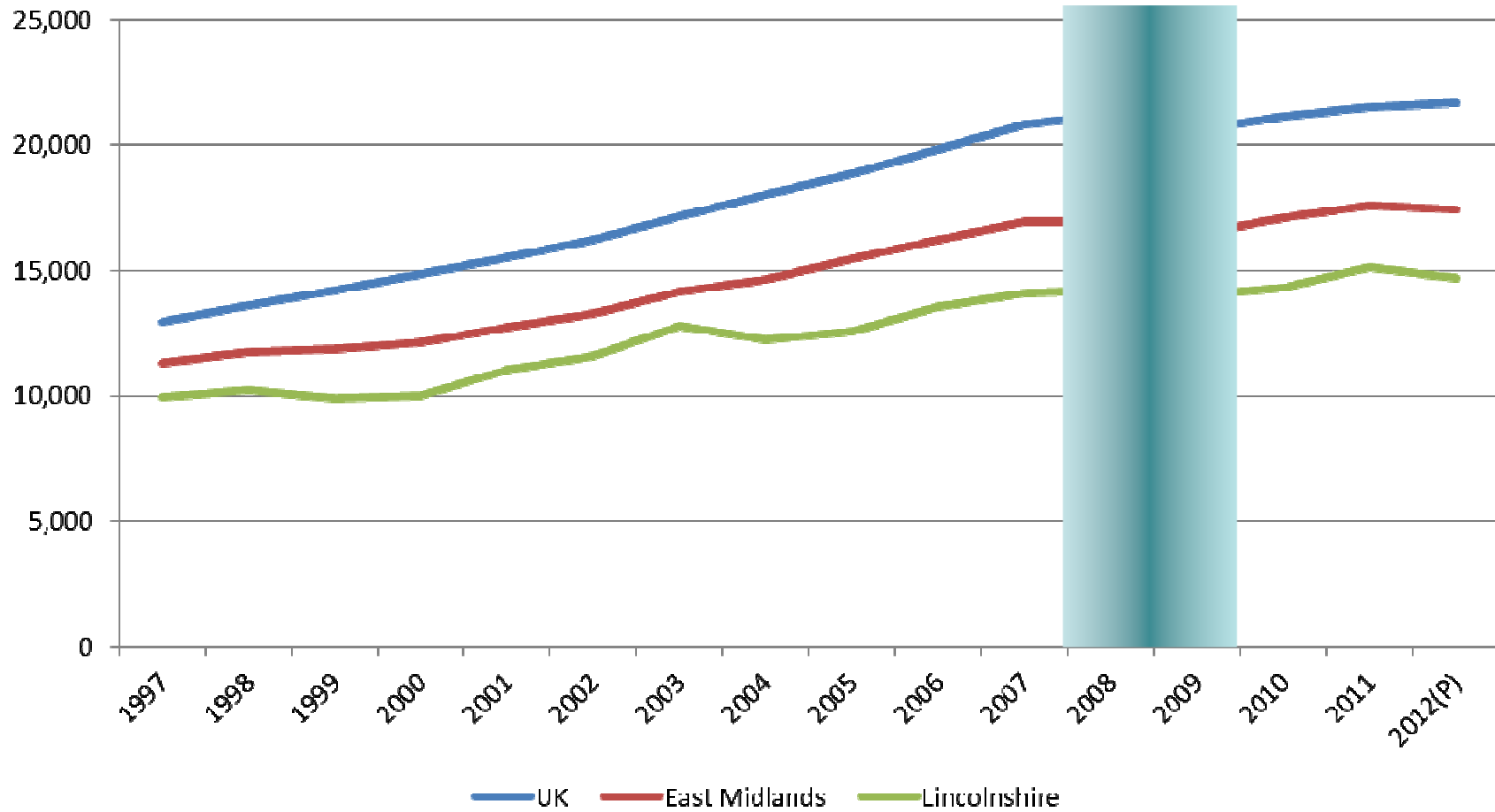


Business Demography – Lincolnshire Births v Deaths





GVA per head





Gross Value Added (GVA)

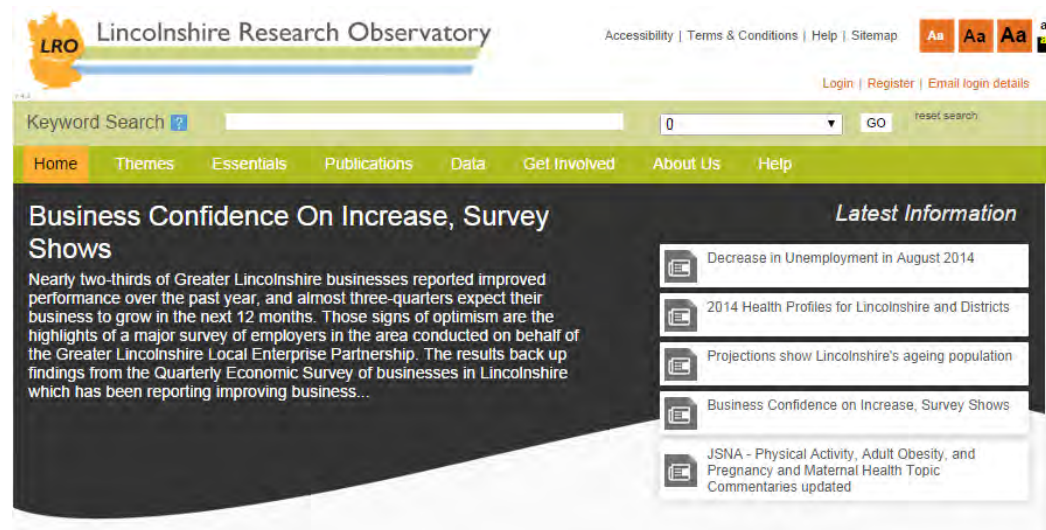
- Recession driven decline 2008-09

	% change in GVA 2008-2009
UK GVA fell by £31.8bn	-2.4%
East Midlands GVA fell by £1.76bn	-2.3%
Lincolnshire GVA fell by £82m	-0.8%



How can I access this information?

- LRO has recently had a facelift....
- Toolkits
- Theme pages
- Area profiles
- Links





2011 Census

2011 Census Skills

This area profile

2011 Ce

- Qualifications
- Qualifications
- Qualifications
- Qualifications
- Qualifications
- Qualifications
- Qualifications
- Qualifications
- Qualifications
- Qualifications
- Qualifications
- Qualifications
- Qualifications
- Qualifications
- Qualifications
- Qualifications
- Qualifications
- Qualifications
- Qualifications
- Qualifications



Lincolnshire Economic Briefing

www.research-lincs.org.uk

Is the pace of improvement slowing?

Businesses in Lincolnshire continue to report improving trading conditions during the second quarter of the year. However, the pace of growth appears to be steady with some indications that concerns about supply and tight profit margins may be slowing the pace of improvement

Responding to the most recent Quarterly Economic Survey (QES) the number of businesses (all sectors) reporting improved sales in domestic markets was up by one per cent on last quarter to 38 per cent. However the numbers reporting worsening sales was also up 4 percentage points to 16 per cent. The difference, i.e. the balance between the two figures is still positive, but at 22 per cent is 3 percentage points down on last quarter. This is the trend with most of the Q2 indicators.

June 2014

Lincolnshire Research Observatory

web: www.research-lincs.org.uk

tel: 01522 550567

email: LRO@lincolnshire.gov.uk

Quarterly Economic Survey Headlines Q2

The % of businesses reporting improvements compared to those reporting worsening performance...

Over the past 3 months ...

- Domestic Sales improved +22%
- Export Sales improved +7%
- Export Orders improved +11%
- Profitability increased +2%
- Turnover increased +20%
- Market Share increased +10%

Skegness

Lincolnshire	
24,964	
83,151	
97,097	
72,729	
154,691	
32,829	
4.20%	
14.10%	
16.40%	
12.30%	
21.30%	
26.10%	
5.50%	



- Population
- Population Trends
- Population Characteristics
- Economy**
- Health
- Deprivation and Poverty
- Crime and Community Safety
- Housing
- Education and Skills
- Skills and Qualifications
- Access to Services
- Travel to Work
- Environment

Economy

[Help on using this page](#)

The Importance Of The Economy

In light of the credit crunch, ensuing recession, and subsequent economic downturn and protracted uncertainty, the poor performance of national and global economies has become headline news after years of growth and prosperity.

With the shift towards localism under the coalition government, there is an increasing need for local service providers to make a difference despite some of the global drivers of local economic change. To do this, they need to have a clear picture of what is going on in their economy.

The Economic Briefing reports on the latest survey of local businesses and provides an up to date snapshot of the local economic climate.

There are various and numerous sources of economic and labour market information produced by many different organisations and they vary in terms of their timeliness and accuracy. This can cause confusion as to what these sources actually show about the performance of the local economy and potentially could mean that businesses and individuals are not getting the support they need.

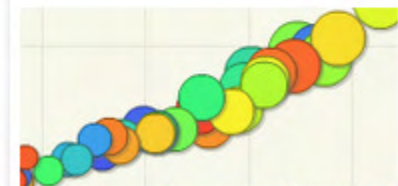
Toolkits



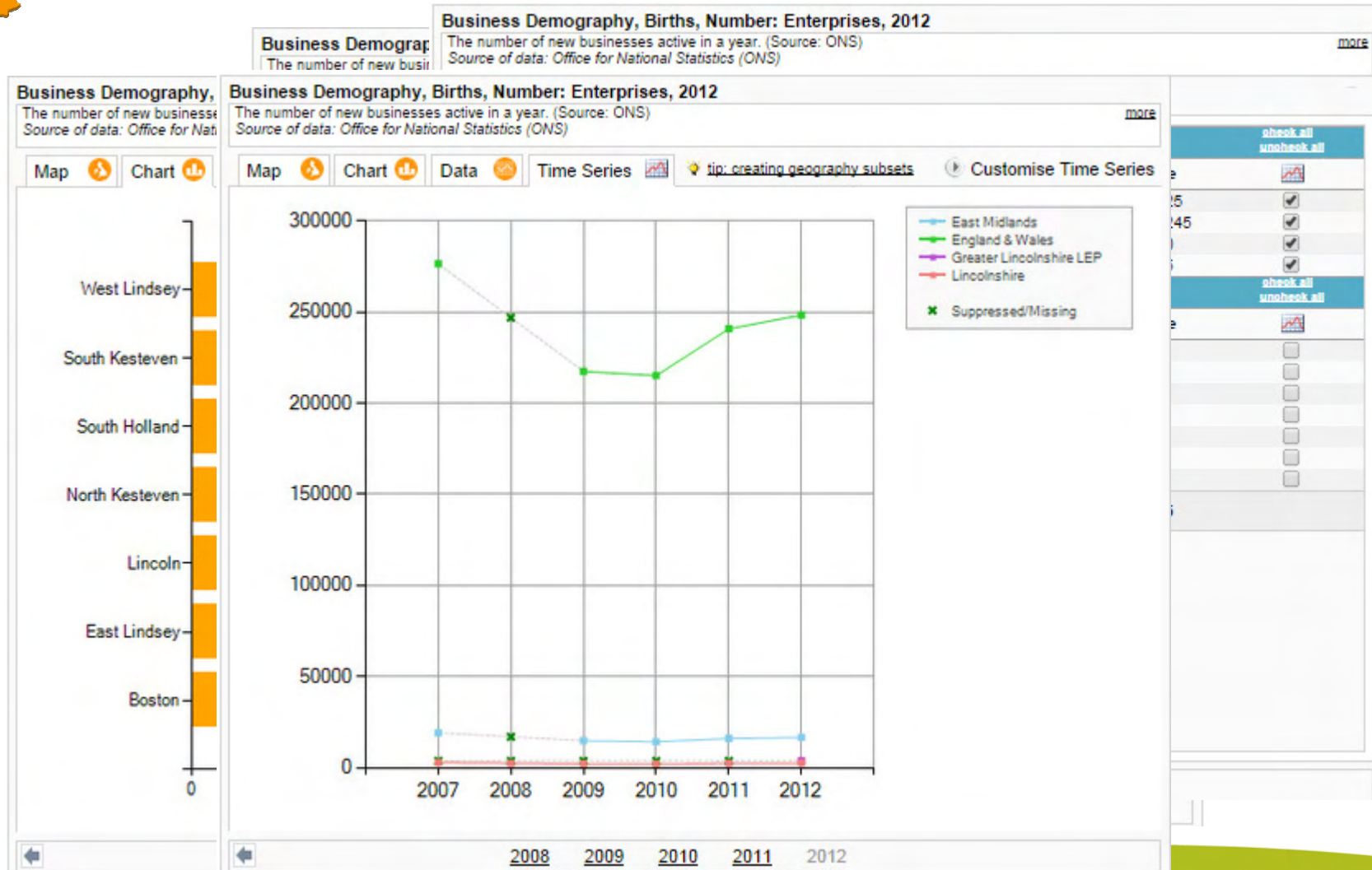
[Lincolnshire Economic Assessment Toolkit](#)



[ONS Gross Domestic Household Income Interactive Map](#)



[ONS Gross Domestic Household Income Interactive Motion Chart](#)





Coming soon.....

Economy Tracker (coming early 2015)



Greater Lincolnshire Business Survey

- Incorporating Lincolnshire, North Lincolnshire and North East Lincolnshire
- Undertaken in April-June 2014
- 1,600 businesses surveyed
- Executive Summary now on LRO



Questions?

Get involved
Register at www.research-lincs.org

LRO@lincolnshire.gov.uk

T: 01522 550567