

**D2N2 Active Engagement Bulletin: May 2019**

Welcome to the May edition of the D2N2 and One East Midlands Active Engagement & Skills bulletin; news, activities and opportunities relating to the D2N2 Local Enterprise Partnership (LEP) for the VCS and partners. This bulletin is distributed at the start of every month; providing a round-up of recent news and highlighting what’s coming up.

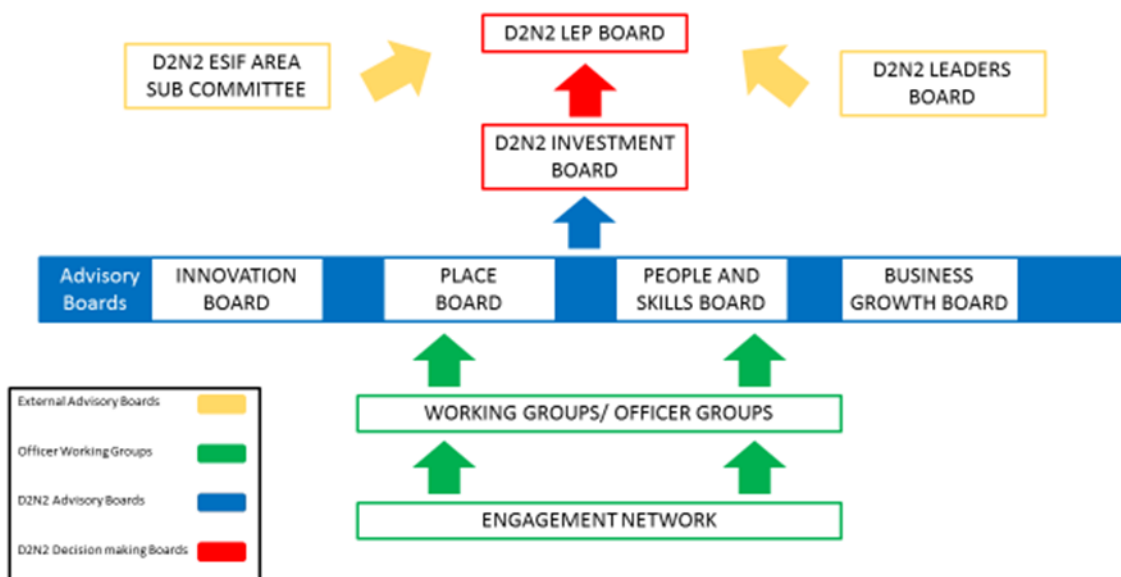
For information on the role of LEPs and their relevance to your work please visit the One East Midlands [policy page](#). Information specific to D2N2 can be found [here](#) at One East Midlands or on the D2N2 website at [www.d2n2lep.org](http://www.d2n2lep.org)

If you would like to contact Rachel Quinn at D2N2 or have items of relevance to this bulletin please contact [Rachel.quinn@d2n2lep.org](mailto:Rachel.quinn@d2n2lep.org) or tel: 07551 124225.

**Inclusion Governance**

**Update from Jane Howson: VCSE representative on the D2N2 Board**

Following my previous update and confirmation of the new governance structure for D2N2, I thought it would be helpful to share a diagram of that new structure.



Having accepted the role of Deputy Chair of the People & Skills Advisory Board I have been increasingly involved in discussions around our people and skills priorities and the work of the Skills Advisory Panel in D2N2. The first meeting of the People & Skills Advisory Board will be on 5<sup>th</sup> June and all other new Advisory Boards will hold their first meetings between late May and mid-June – it’s a busy time at D2N2.

Membership of these Boards is now forming and as previously reported this will include Inclusion representation on each one. Recruitment to these is now open and I would encourage people who can support the LEP to build inclusion principles into their areas of operation to think about applying. Links to the role description is given later in this bulletin but please be aware that the expectations on members to engage and contribute is now clear throughout all levels of LEP governance.

As ever, if you'd like to know more from me about what engagement with D2N2 is like and what to expect please do get in touch.

Jane Howson

### **D2N2 Inclusion Representatives: Recruitment OPEN**

D2N2 LEP is committed to ensuring that the work of the partnership and the investments it brings benefit all aspects of our communities and drives social inclusion and equalities.

Are you an experienced leader working in social inclusion? If so the Third Sector Inclusion Group on behalf of D2N2 is looking for representatives for the following Boards.

- Place Board (2 inclusion reps with 1 reserved for VCSE organisations)
- People and Skills Board (1 inclusion rep reserved for VCSE organisations and 1 inclusion rep already filled by the LEP Board VCSE rep)
- Business Growth Board (1 inclusion rep)
- Innovation Board (1 inclusion rep)
- Investment Board (1 inclusion rep)

For more information and to view the role description, please visit the [One East Midlands website](#).

### **D2N2 Building Better Opportunities Stakeholder Managers' e- bulletin**

The latest D2N2 BBO Stakeholder Managers' e-bulletin is live – read the bulletin and sign up to receive it direct by following the link below:

[BBO Stakeholder Managers' April e-bulletin](#)

### **ESIF Programme Updates**

#### **Open calls: ESF**

There are 2 current ESF calls open in D2N2 and workshop dates to support organisations wishing to apply to the calls have been confirmed – Chesterfield 15/5/19, Nottingham 21/5/19 and Derby 24/5/19.

Digital Skills for the Unemployed: this call seeks proposals to provide digital skills training to unemployed and inactive individuals to upskill and reskill them and provide a pipeline of

people with digital business skills which will lead to improved business efficiencies and enhanced productivity.

Digital Skills for the Employed: this call will support our businesses to access the skills they need for productivity growth by providing employees with the skills to adapt to the digitalisation of the workplace and better engage with the knowledge and assets in our higher and further educational institutions and increase the take up of apprenticeships, particularly at higher and graduate levels.

For more information on the open calls and dates for technical assistance workshops, please visit the [D2N2 TA website](#).

### **Update on Closed calls**

D2N2 is still waiting to receive DWP assessments of applications for the previous round of Open Calls for projects:

- Access to Employment for Jobseekers and Inactive People and;
- Careers & Employability Service for those at risk of becoming NEET in the D2N2 LEP area

It is unlikely that these assessments will be received in advance of the ESIF Committee on 15<sup>th</sup> May 2019 therefore a proposal for a process for strategic review between meetings is likely to be agreed.

### **ESFA Opt In – Project**

The ESFA have awarded the following contracts:

Skills Support for the Workforce and Redundancy – SERCO

Youth Engagement in D2N1 - DTS / Learndirect

Community Grants in D2N2 – Futures Group Nottingham

D2N2 ESIF Coordinator, Richard Kirkland, is continuing discussions with the Managing Authorities for both ESF and ERDF to discuss call scheduling for unallocated ESIF funds. This work will be primarily focussed with DWP to target the higher proportion of uncommitted ESF still available. To find out more please contact [Richard.kirkland@d2n2lep.org](mailto:Richard.kirkland@d2n2lep.org)

### **ESF Community Grants – applications open**

Futures have announced that the application form for the first round of Community Grants is now available.

To find the guidance and application form please follow the [link to their website](#).

## **ESF Community Grants – grants panel recruitment**

Futures are looking for individuals from the Community and Voluntary Sector to be a part of the Community Grants Steering Group and Grant Panel.

For more information, visit the [D2N2 TA website](#).

## **Open calls: ERDF – watch this space!**

There are no current calls for ERDF activity in D2N2.

MHCLG have announced details of the next ERDF call schedule. The call window will open on Friday 28 June 2019 and close on Monday 30 September 2019. All programme activity will need to be completed by Friday 30 June 2023.

All call information will be posted on the D2N2 Technical Assistance website - <http://d2n2ta.org/european-structural-and-investment-funds/european-regional-development-fund/funding-calls/>

Please note that this will be the final ERDF call made at a local D2N2 LEP level for the 2014-2020 programme. Any future ERDF calls will be made at a national level utilising any unused funding at LEP level.

## **GOV.UK and ESIF Action Note Updates**

Visit <https://www.gov.uk/guidance/england-2014-to-2020-european-structural-and-investment-funds> for news and updates.

## **Key Submission Dates for ESF Claims 2019**

In support of timely submission and processing of ESF claims, please note the following deadlines below for the submission of claims.

	Quarter end	Deadline
Q1 19	31/03/2019	08/05/2019
Q2 19	30/06/2019	02/08/2019
Q3 19	30/09/2019	04/11/2019
Q4 19	31/12/2019	05/02/2020

*Please note that projects funded by Co-Financing Organisations have slightly different deadlines.*

## **Interruption to England ESF Programme**

In January 2019 the European Commission notified the Managing Authority that it had placed the England ESF Programme into 'Interruption'. This means it will not make further payments to the MA until issues identified are resolved. DWP are currently working to address the Commission's concerns and recommendations; and ensure that all systems are compliant with the EU Regulations. This interruption does not impact on claims and payments made by the MA to ESF grant recipients.

## **Implications of EU Exit on Erasmus+ and European Solidarity Corps:**

If you or your partner organisations participate in the Youth and Sport strands of Erasmus+ and European Solidarity Corps, please check the National Agency website <https://www.erasmusplus.org.uk/brexit-update> or .gov.uk for the latest information and FAQs on the impact of EU Exit.

## **Other News**

### **Free mental health training for employers in Nottingham**

Looking after the mental health of employees makes business sense: tackling stigma can make a real difference to sickness absence rates, staff wellbeing, productivity and retention. Since signing the Employer Pledge, 95% of employers said it had a positive impact on their organisation.

To find out more about the [Employer Pledge](#) and supporting services in Nottingham you are invited to the above workshop session taking place on May 14<sup>th</sup>.

For more information on the Time to Change Employer Pledge or to book your place at the workshop, please email [sharan.jones@nottinghamcity.gov.uk](mailto:sharan.jones@nottinghamcity.gov.uk)

### **Rural Community Energy Fund**

Midlands Energy Hub will award the £1.8 million RCEF fund for the Midlands Region over a two year time period.

Grants available for rural, community lead projects:

- Stage 1 feasibility grants < £40,000
- Stage 2 grants < £100,000 for business development and planning of feasible schemes.

At this stage it is envisaged that the overall process will be:

- Call for applications (4 calls a year)
- Community Group submits a Pre-application Questionnaire

- Principal Regional Energy Project Officer (PREPO) engages with community group
- Application for Stage 1 / 2 submitted
- Applications circulated to RCEF Midlands Energy Hub Board members to review
- Midlands Energy Hub Board meets (with BEIS representation present)
  - Terms of Reference are being drafted
- Applications awarded / rejected
- PREPO – works with community group to ensure successful groups use grant funds correctly and successfully

Each community receiving funds would need to agree to provide resources to Community Energy England for sharing across all new schemes and provide support to the Midlands Energy Hub on engaging other communities to develop a peer-to-peer support network to further build capacity at local level

Rural communities are defined as:

a) Settlements below 10,000 residents- as defined in the Defra Rural-Urban Classification for Output Areas in England

[https://assets.publishing.service.gov.uk/government/uploads/system/uploads/attachment\\_data/file/427114/RUCOA\\_leaflet\\_May2015.pdf](https://assets.publishing.service.gov.uk/government/uploads/system/uploads/attachment_data/file/427114/RUCOA_leaflet_May2015.pdf)

b) Communities within local authority areas which are classified as ‘predominantly rural’ by the Office of National Statistics

<https://www.gov.uk/government/statistics/2011-rural-urban-classification-of-local-authority-and-other-higher-level-geographies-for-statistical-purposes>

Contact Michael Gallagher for more information via: [michael.gallagher@nottinghamcity.gov.uk](mailto:michael.gallagher@nottinghamcity.gov.uk)

### **New Youth Charter**

A new Youth Charter will be developed to set out a vision for young people over the next generation and beyond, Mims Davies, Minister for Sport and Civil Society has announced.

The charter will reaffirm Government’s commitment to give young people a strong voice on the issues they care about such as combating serious violence and knife crime, addressing mental and physical health challenges and concerns about the environment and climate change.

It will be developed over the coming months, with Government working alongside youth sector organisations and young people.

The charter will build on the existing support and range of innovative projects currently supporting young people across the country. This includes £90 million from dormant bank accounts that is being used to help some of the most disadvantaged young people into employment.

Read the full announcement [here](#).

**This project is part-funded by the European Social Fund as part of the 2014-2020 European Structural and Investment Funds Growth Programme in England.**