

# East Midlands

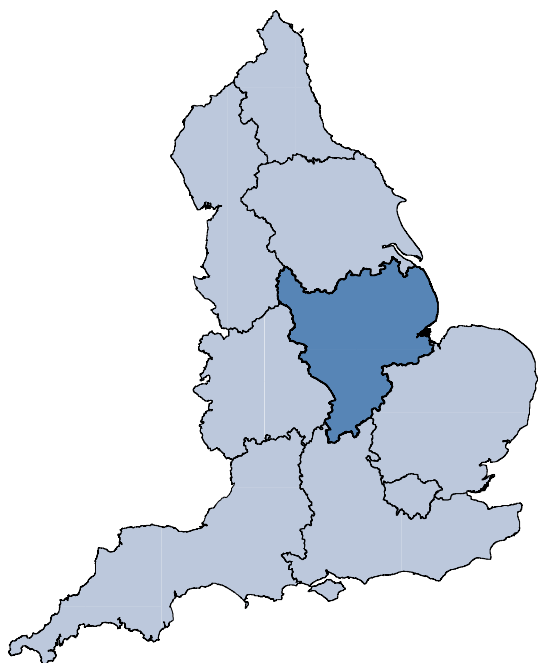
This profile gives a picture of health in this area. It is designed to help local government and health services improve people's health and reduce health inequalities.

Health Profiles are produced every year by the Association of Public Health Observatories.

Visit the Health Profiles website to:

- see profiles for other areas
- use interactive maps
- find more detailed information

[www.healthprofiles.info](http://www.healthprofiles.info)



Based on Ordnance Survey material. © Crown Copyright. All rights reserved.  
DH 100020290 2010. Other map data © Collins Bartholomew.

**POPULATION 4,433,000**

Mid-2008 population estimate

Source: National Statistics website: [www.statistics.gov.uk](http://www.statistics.gov.uk)



## East Midlands at a glance

- The health of people in the East Midlands is generally close to the England average. However, levels of physical activity in adults, children in Reception year classified as obese and hospital stays for alcohol related harm are all better than the average for England, whilst levels of smoking in pregnancy, breast feeding initiation and infant deaths are all worse.
- There are inequalities in health within the East Midlands which are closely associated with deprivation. For example, the health of people in Harborough, Rushcliffe and South Northamptonshire is generally better than both the England average and the East Midlands average, while the health of people in Nottingham, Mansfield and Derby is generally worse.
- Death rates from all causes for both males and females have reduced over recent years; however life expectancy for both men and women living in the East Midlands is lower than the England average.
- In the East Midlands, levels of people diagnosed with diabetes have increased over the last five years, and are higher than the average for England.
- The priorities for the East Midlands are to address health inequalities, tobacco and alcohol use, obesity, physical activity, avoidable injury and death, affordable warmth and the health of children and young people.
- Further information is available in the series of Annual Reports from the Regional Director of Public Health for the East Midlands, which are available from [www.emphasisnetwork.org.uk](http://www.emphasisnetwork.org.uk)

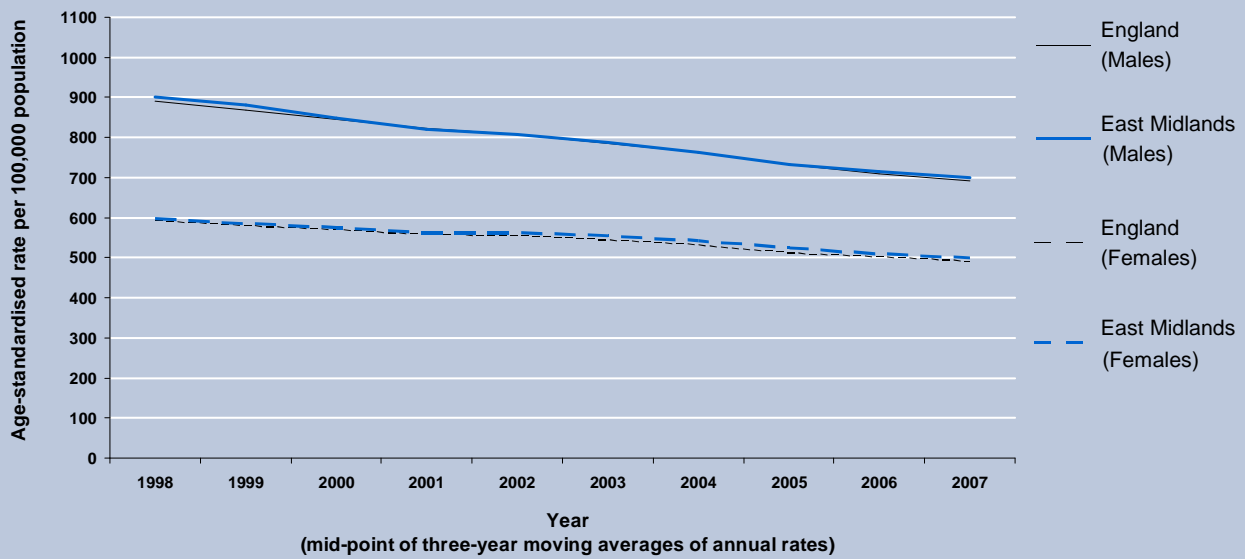






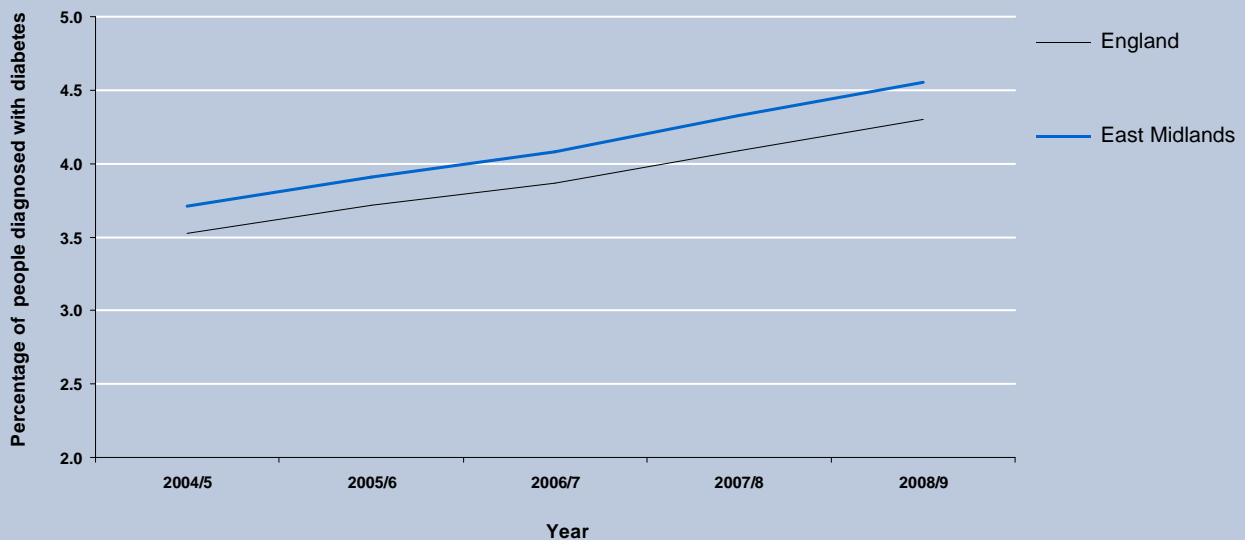
## Trend 1

All-age all-cause mortality per 100,000 males and females for England and East Midlands Region



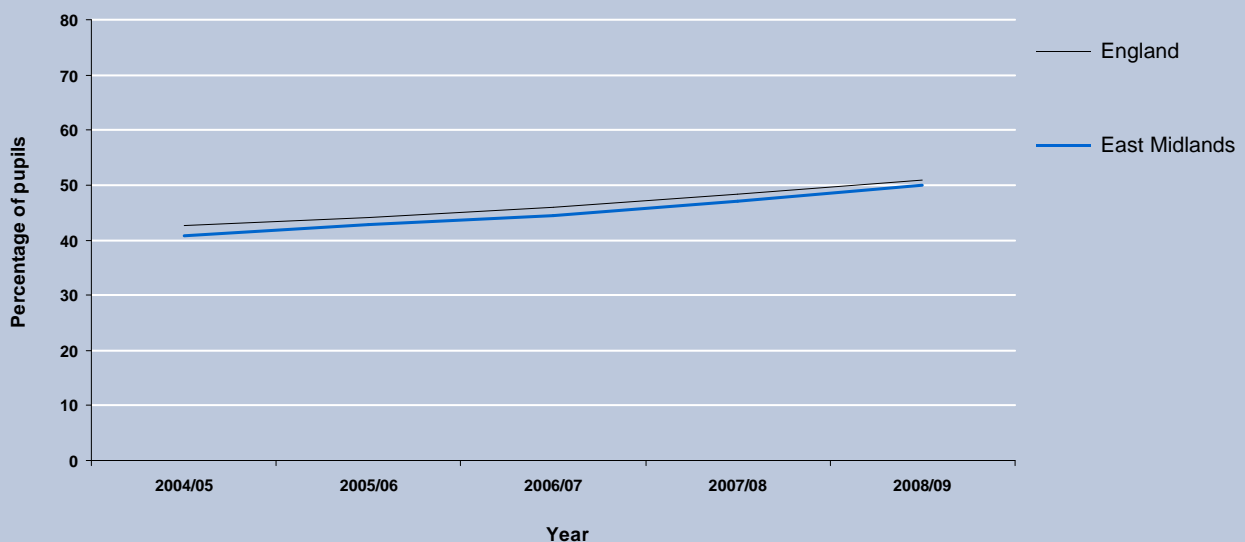
## Trend 2

Percentage of people on GP registers with a recorded diagnosis of diabetes for England and East Midlands Region



## Trend 3

Percentage of pupils achieving 5A\* - C GCSEs (including English and Maths) at Key Stage 4 for England and East Midlands Region



# Local variations

## Regional Context

This table shows how each local authority and county within this region compares to the regional average, for the range of indicators used in the local Health Profiles. Indicators and areas are sorted from top to bottom and from left to right so that the better overall results appear at the top left and worse overall results at the bottom right of the table. A green box may still indicate an important public health problem.

	New cases of tuberculosis	Children in poverty	People diagnosed with diabetes	Violent crime	Deprivation	Incapacity benefits for mental illness	Hospital stays for alcohol related harm	Teenage pregnancy (under 18)	Adults who smoke	Early deaths: heart disease & stroke	Tooth decay in children aged 5 years	Life expectancy - male	Deaths from smoking	GCSE achieved (5A*-C inc. Eng & Maths)	Statutory homelessness	Hip fracture in over-65s	Life expectancy - female	Binge drinking adults	Excess winter deaths	Physically active children	Road injuries and deaths	Smoking in pregnancy	Early deaths: cancer	Healthy eating adults	Obese children	Infant deaths	Incidence of malignant melanoma	Physically active adults	Obese adults	Breast feeding initiation	Carbon emissions	Drug misuse	
Harborough CD																																	
South Northamptonshire CD																																	
North Kesteven CD																																	
Rushcliffe CD																																	
South Kesteven CD																																	
Hinckley and Bosworth CD																																	
Derbyshire Dales CD																																	
Melton CD																																	
East Northamptonshire CD																																	
Blaby CD																																	
Charnwood CD																																	
Rutland UA																																	
Broxtowe CD																																	
Oadby and Wigston CD																																	
South Derbyshire CD																																	
Daventry CD																																	
Gedling CD																																	
West Lindsey CD																																	
North East Derbyshire CD																																	
High Peak CD																																	
South Holland CD																																	
Kettering CD																																	
North West Leicestershire CD																																	
Erewash CD																																	
Newark and Sherwood CD																																	
Amber Valley CD																																	
East Lindsey CD																																	
Wellingborough CD																																	
Boston CD																																	
Bassetlaw CD																																	
Northampton CD																																	
Chesterfield CD																																	
Bolsover CD																																	
Ashfield CD																																	
Lincoln CD																																	
Leicester UA																																	
Derby UA																																	
Corby CD																																	
Mansfield CD																																	
Nottingham UA																																	
Leicestershire CC																																	
Lincolnshire CC																																	
Northamptonshire CC																																	
Derbyshire CC																																	
Nottinghamshire CC																																	

■ Significantly worse than Regional average  
■ Significantly better than Regional average

■ Not significantly different from Regional average  
■ No significance can be calculated, or data unavailable or suppressed due to small numbers

# Local variations

## National Context

This table shows how each local authority and county within this region compares to the England average, for the range of indicators used in the local Health Profiles. Indicators and areas are sorted from top to bottom and from left to right so that the better overall results appear at the top left and worse overall results at the bottom right of the table. A green box may still indicate an important public health problem.

	Children in poverty	New cases of tuberculosis	Deprivation	Incapacity benefits for mental illness	Violent crime	Statutory homelessness	Teenage pregnancy (under 18)	Hospital stays for alcohol related harm	Tooth decay in children aged 5 years	Early deaths: heart disease & stroke	Deaths from smoking	Physically active children	Obese children	Physically active adults	Early deaths: cancer	Life expectancy - male	People diagnosed with diabetes	Excess winter deaths	Hip fracture in over-65s	Binge drinking adults	Healthy eating adults	GCSE achieved (5A*-C inc. Eng & Maths)	Incidence of malignant melanoma	Infant deaths	Life expectancy - female	Adults who smoke	Obese adults	Breast feeding initiation	Road injuries and deaths	Smoking in pregnancy	Carbon emissions	Drug misuse	
Harborough CD																																	
Rushcliffe CD																																	
South Kesteven CD																																	
South Northamptonshire CD																																	
Derbyshire Dales CD																																	
North Kesteven CD																																	
East Northamptonshire CD																																	
Hinckley and Bosworth CD																																	
Melton CD																																	
Rutland UA																																	
Broxtowe CD																																	
Blaby CD																																	
Chamwood CD																																	
Daventry CD																																	
Oadby and Wigston CD																																	
West Lindsey CD																																	
Gedling CD																																	
High Peak CD																																	
Newark and Sherwood CD																																	
North East Derbyshire CD																																	
South Derbyshire CD																																	
South Holland CD																																	
East Lindsey CD																																	
Erewash CD																																	
North West Leicestershire CD																																	
Kettering CD																																	
Amber Valley CD																																	
Boston CD																																	
Wellingborough CD																																	
Northampton CD																																	
Ashfield CD																																	
Bolsover CD																																	
Bassetlaw CD																																	
Chesterfield CD																																	
Lincoln CD																																	
Corby CD																																	
Leicester UA																																	
Mansfield CD																																	
Derby UA																																	
Nottingham UA																																	
Leicestershire CC																																	
Lincolnshire CC																																	
Northamptonshire CC																																	
Nottinghamshire CC																																	
Derbyshire CC																																	

■ Significantly worse than England average  
■ Significantly better than England average

■ Not significantly different from England average  
■ No significance can be calculated, or data unavailable or suppressed due to small numbers

# Regional variations

## National Context

This table shows how each region compares to the England average for the range of indicators used in the local Health Profiles. Areas are sorted by a summary score of red, amber and green indicators so that areas with more indicators which are better than the England average appear at the left and those which are worse appear at the right. A green box may still indicate an important public health problem.

Domain	Indicator	England	South West	East of England	South East	East Midlands	London	North West	North East	Yorkshire and the Humber	West Midlands
Our communities	1 Deprivation	19.9	9.2	6.2	5.9	16.6	28.5	31.8	33.7	27.2	27.4
	2 Children in poverty	22.4	16.9	16.9	15.4	19.5	33.9	25.0	26.0	23.0	24.8
	3 Statutory homelessness	2.48	1.65	2.13	1.37	1.98	4.02	1.87	2.83	2.87	3.88
	4 GCSE achieved (5A*-C inc. Eng & Maths)	50.9	51.8	51.9	53.8	49.9	53.9	49.9	48.1	47.3	48.5
	5 Violent crime	16.4	14.4	12.2	16.1	16.1	23.0	15.9	14.5	15.7	16.5
	6 Carbon emissions	6.8	6.9	7.0	6.6	7.3	5.9	6.8	7.9	7.3	6.8
Children's and young people's health	7 Smoking in pregnancy	14.6	14.8	14.9	12.8	16.0	7.5	19.0	22.8	18.4	15.3
	8 Breast feeding initiation	72.5	77.5	72.4	78.4	71.4	86.3	62.7	54.5	67.7	65.2
	9 Physically active children	49.6	52.4	50.1	47.6	50.2	49.3	51.6	51.1	47.6	48.4
	10 Obese children	9.6	8.9	8.7	8.7	9.1	11.2	9.6	10.2	9.6	10.1
	11 Tooth decay in children aged 5 years	1.1	1.0	0.8	0.9	1.0	1.3	1.5	1.5	1.5	1.0
	12 Teenage pregnancy (under 18)	40.9	34.6	32.6	33.0	39.9	45.3	45.7	50.3	47.2	46.2
Adults' health and lifestyle	13 Adults who smoke	22.2	21.4	20.9	19.8	24.0	20.8	23.6	27.9	24.0	21.6
	14 Binge drinking adults	20.1	20.7	18.2	18.1	20.1	14.3	23.3	30.1	24.5	18.8
	15 Healthy eating adults	28.7	29.6	30.3	29.2	28.6	36.4	26.2	21.5	24.5	25.7
	16 Physically active adults	11.2	12.7	10.9	11.9	11.8	10.2	10.8	11.3	12.1	10.1
	17 Obese adults	24.2	24.7	23.6	23.7	24.3	20.7	23.4	27.8	26.3	26.4
Disease and poor health	18 Incidence of malignant melanoma	12.6	17.7	12.1	15.2	12.2	7.3	12.7	10.7	13.6	11.2
	19 Incapacity benefits for mental illness	27.6	26.8	20.9	19.9	25.1	26.7	40.0	38.5	28.1	28.9
	20 Hospital stays for alcohol related harm	1580	1490	1300	1240	1560	1490	2080	2250	1520	1660
	21 Drug misuse										
	22 People diagnosed with diabetes	4.30	4.07	4.01	3.90	4.55	4.43	4.56	4.35	4.33	4.70
	23 New cases of tuberculosis	15	5	8	8	13	44	11	7	13	18
	24 Hip fracture in over-65s	479.2	465.7	467.5	473.0	484.2	436.6	498.8	530.6	485.5	499.3
Life expectancy and causes of death	25 Excess winter deaths	15.6	16.6	16.6	15.7	14.5	15.3	14.5	16.1	14.5	16.7
	26 Life expectancy - male	77.9	79.0	78.9	79.2	77.8	78.2	76.3	76.5	77.1	77.2
	27 Life expectancy - female	82.0	83.1	82.8	83.0	81.8	82.7	80.6	80.6	81.3	81.6
	28 Infant deaths	4.84	4.07	4.26	4.02	5.20	4.57	5.26	4.76	5.58	6.28
	29 Deaths from smoking	206.8	171.7	180.7	174.9	204.1	200.4	254.4	276.1	234.9	211.1
	30 Early deaths: heart disease & stroke	74.8	62.4	64.1	62.5	74.3	79.4	91.3	87.2	82.8	79.3
	31 Early deaths: cancer	114.0	104.7	105.9	106.3	113.4	109.8	127.1	134.0	120.2	116.8
	32 Road injuries and deaths	51.3	46.2	54.8	52.3	56.4	49.7	50.8	41.2	60.3	46.0

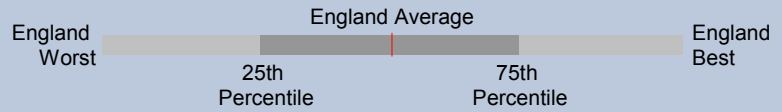
■ Significantly worse than England average  
■ Significantly better than England average

■ Not significantly different from England average  
■ No significance can be calculated, or data unavailable

# Health summary for East Midlands

The chart below shows how people's health in this region compares to the rest of England. The regional result for each indicator is shown as a diamond, against the range of results for local authorities in England which is shown as a bar. A green diamond may still indicate an important public health problem.

- ◆ Significantly worse than England average
- ◇ Not significantly different from England average
- ◇ Significantly better than England average
- ◇ No significance can be calculated



Domain	Indicator	Local No. Per Year	Local Value	Eng Avg	Eng Worst	England Range	Eng Best
Our communities	<b>1</b> Deprivation	717204	16.6	19.9	89.2	[Bar chart showing range and diamond]	0.0
	<b>2</b> Children in poverty	160483	19.5	22.4	66.5	[Bar chart showing range and diamond]	6.0
	<b>3</b> Statutory homelessness	3670	1.98	2.48	9.84	[Bar chart showing range and diamond]	0.00
	<b>4</b> GCSE achieved (5A*-C inc. Eng & Maths)	25772	49.9	50.9	32.1	[Bar chart showing range and diamond]	76.1
	<b>5</b> Violent crime	70877	16.1	16.4	36.6	[Bar chart showing range and diamond]	4.8
	<b>6</b> Carbon emissions	32320	7.3	6.8	14.4	[Bar chart showing range and diamond]	4.1
Children and young people's health	<b>7</b> Smoking in pregnancy	8265	16.0	14.6	33.5	[Bar chart showing range and diamond]	3.8
	<b>8</b> Breast feeding initiation	34258	71.4	72.5	39.7	[Bar chart showing range and diamond]	92.7
	<b>9</b> Physically active children	291975	50.2	49.6	24.6	[Bar chart showing range and diamond]	79.1
	<b>10</b> Obese children	3800	9.1	9.6	14.7	[Bar chart showing range and diamond]	4.7
	<b>11</b> Tooth decay in children aged 5 years	n/a	1.0	1.1	2.5	[Bar chart showing range and diamond]	0.2
	<b>12</b> Teenage pregnancy (under 18)	3379	39.9	40.9	74.8	[Bar chart showing range and diamond]	14.9
Adults' health and lifestyle	<b>13</b> Adults who smoke	n/a	24.0	22.2	35.2	[Bar chart showing range and diamond]	10.2
	<b>14</b> Binge drinking adults	n/a	20.1	20.1	33.2	[Bar chart showing range and diamond]	4.6
	<b>15</b> Healthy eating adults	n/a	28.6	28.7	18.3	[Bar chart showing range and diamond]	48.1
	<b>16</b> Physically active adults	n/a	11.8	11.2	5.4	[Bar chart showing range and diamond]	16.6
	<b>17</b> Obese adults	n/a	24.3	24.2	32.8	[Bar chart showing range and diamond]	13.2
Disease and poor health	<b>18</b> Incidence of malignant melanoma	537	12.2	12.6	27.3	[Bar chart showing range and diamond]	3.7
	<b>19</b> Incapacity benefits for mental illness	68712	25.1	27.6	58.5	[Bar chart showing range and diamond]	9.0
	<b>20</b> Hospital stays for alcohol related harm	82047	1560	1580	2860	[Bar chart showing range and diamond]	784
	<b>21</b> Drug misuse					[Bar chart showing range and diamond]	
	<b>22</b> People diagnosed with diabetes	201743	4.55	4.30	6.72	[Bar chart showing range and diamond]	2.69
	<b>23</b> New cases of tuberculosis	552	13	15	110	[Bar chart showing range and diamond]	0
	<b>24</b> Hip fracture in over-65s	4551	484.2	479.2	643.5	[Bar chart showing range and diamond]	273.6
Life expectancy and causes of death	<b>25</b> Excess winter deaths	1922	14.5	15.6	26.3	[Bar chart showing range and diamond]	2.3
	<b>26</b> Life expectancy - male	n/a	77.8	77.9	73.6	[Bar chart showing range and diamond]	84.3
	<b>27</b> Life expectancy - female	n/a	81.8	82.0	78.8	[Bar chart showing range and diamond]	88.9
	<b>28</b> Infant deaths	273	5.20	4.84	8.67	[Bar chart showing range and diamond]	1.08
	<b>29</b> Deaths from smoking	6870	204.1	206.8	360.3	[Bar chart showing range and diamond]	118.7
	<b>30</b> Early deaths: heart disease & stroke	3646	74.3	74.8	125.0	[Bar chart showing range and diamond]	40.1
	<b>31</b> Early deaths: cancer	5509	113.4	114.0	164.3	[Bar chart showing range and diamond]	70.5
	<b>32</b> Road injuries and deaths	2479	56.4	51.3	167.0	[Bar chart showing range and diamond]	14.6

**Note (numbers in bold refer to the above indicators)**

**1** % of people in this area living in 20% most deprived areas of England 2007 **2** % of children living in families receiving means-tested benefits 2007 **3** Crude rate per 1,000 households 2008/09 **4** % at Key Stage 4 2008/09 **5** Recorded violence against the person crimes crude rate per 1,000 population 2008/09 **6** Total end user CO<sub>2</sub> emissions per capita (tonnes CO<sub>2</sub> per resident) 2007 **7** % of mothers smoking in pregnancy where status is known 2008/09 **8** % of mothers initiating breast feeding where status is known 2008/09 **9** % of year 1-13 pupils who spend at least 3 hours per week on high quality PE and school sport 2008/09 **10** % of school children in reception year 2008/09 **11** Weighted mean number of teeth per 5 yr old child sampled that were actively decayed, missing or filled 2007/08 **12** Under-18 conception rate per 1,000 females aged 15-17 (crude rate) 2006-2008 (provisional) **13** % adults, direct estimate using Health Survey for England 2006-2008 **14** % adults, direct estimate using Health Survey for England 2007-2008 **15** % adults, direct estimate using Health Survey for England 2006-2008 **16** % aged 16+ 2008/09 **17** % adults, direct estimate using Health Survey for England 2006-2008 **18** Directly age standardised rate per 100,000 population under 75 2004-2006 **19** Crude rate per 1,000 working age population 2008 **20** Directly age and sex standardised rate per 100,000 population 2008/09 (rounded) **21** New Problematic Drug User estimates were not available in time for inclusion **22** % of people on GP registers with a recorded diagnosis of diabetes 2008/09 **23** Crude rate per 100,000 population 2006-2008 **24** Directly age-standardised rate per 100,000 population for emergency admission 2008/09 **25** Ratio of excess winter deaths (observed winter deaths minus expected deaths based on non-winter deaths) to average non-winter deaths 1.08.05- 31.07.08 **26** At birth, 2006-2008 **27** At birth, 2006-2008 **28** Rate per 1,000 live births 2006-2008 **29** Per 100,000 population age 35+, directly age standardised rate 2006-2008 **30** Directly age standardised rate per 100,000 population under 75, 2006-2008 **31** Directly age standardised rate per 100,000 population under 75, 2006-2008 **32** Rate per 100,000 population 2006-2008

More indicator information is available in The Indicator Guide: [www.healthprofiles.info](http://www.healthprofiles.info) For information on your area contact your regional PHO: [www.apho.org.uk](http://www.apho.org.uk)

You may use this profile for non-commercial purposes as long as you acknowledge where the information came from by printing 'Source: APHO and Department of Health. © Crown Copyright 2010'.