

# Economic Information about Derbyshire

**Melanie Turvey**

and

**Mick Evans**

**Derbyshire County Council**

National

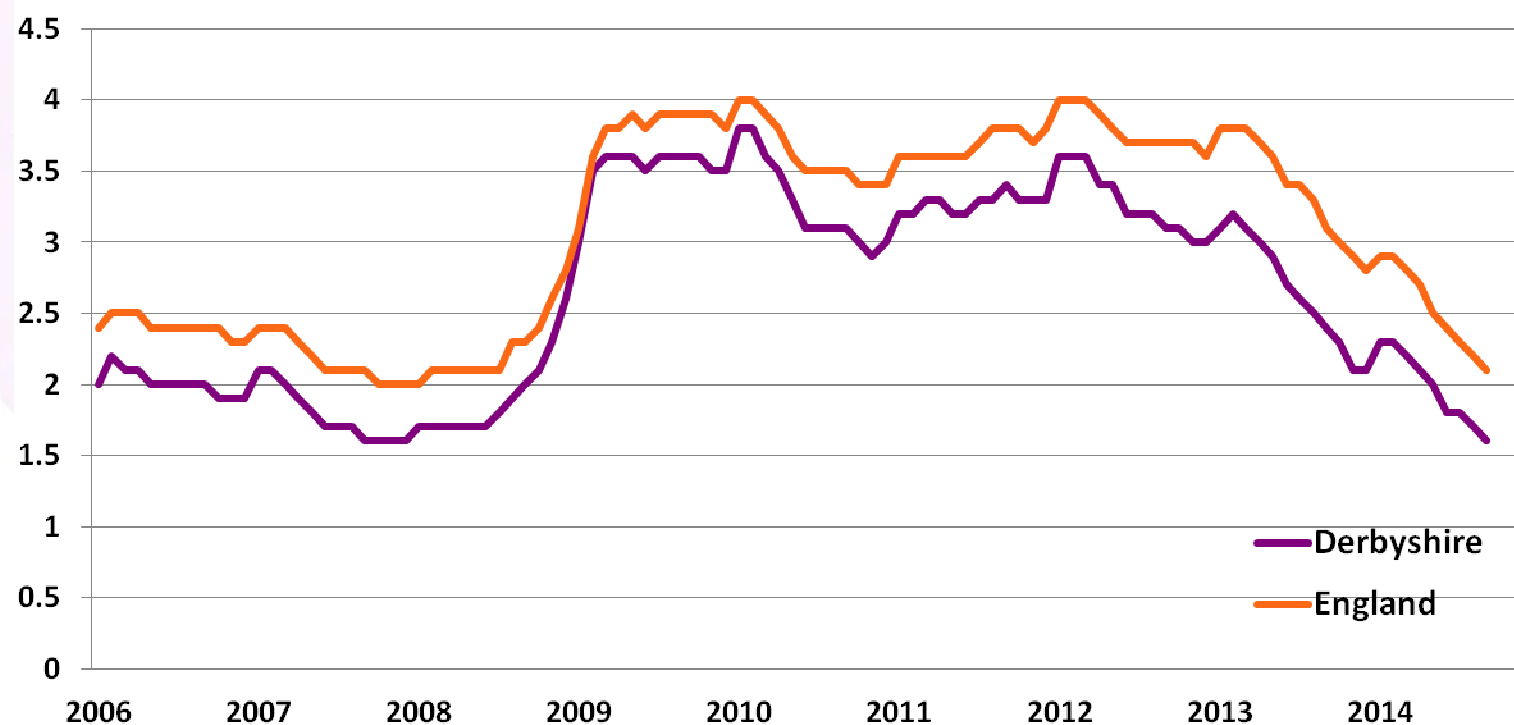
Regional

Local

# National Sources of Information (1)

- NOMIS – official labour market statistics  
<http://www.nomisweb.co.uk/>
  - Demographics
  - BRES – Business Register & Employment Survey
  - Unemployment
  - Benefits
  - Earnings
  - Census
  - APS – Annual Population Survey

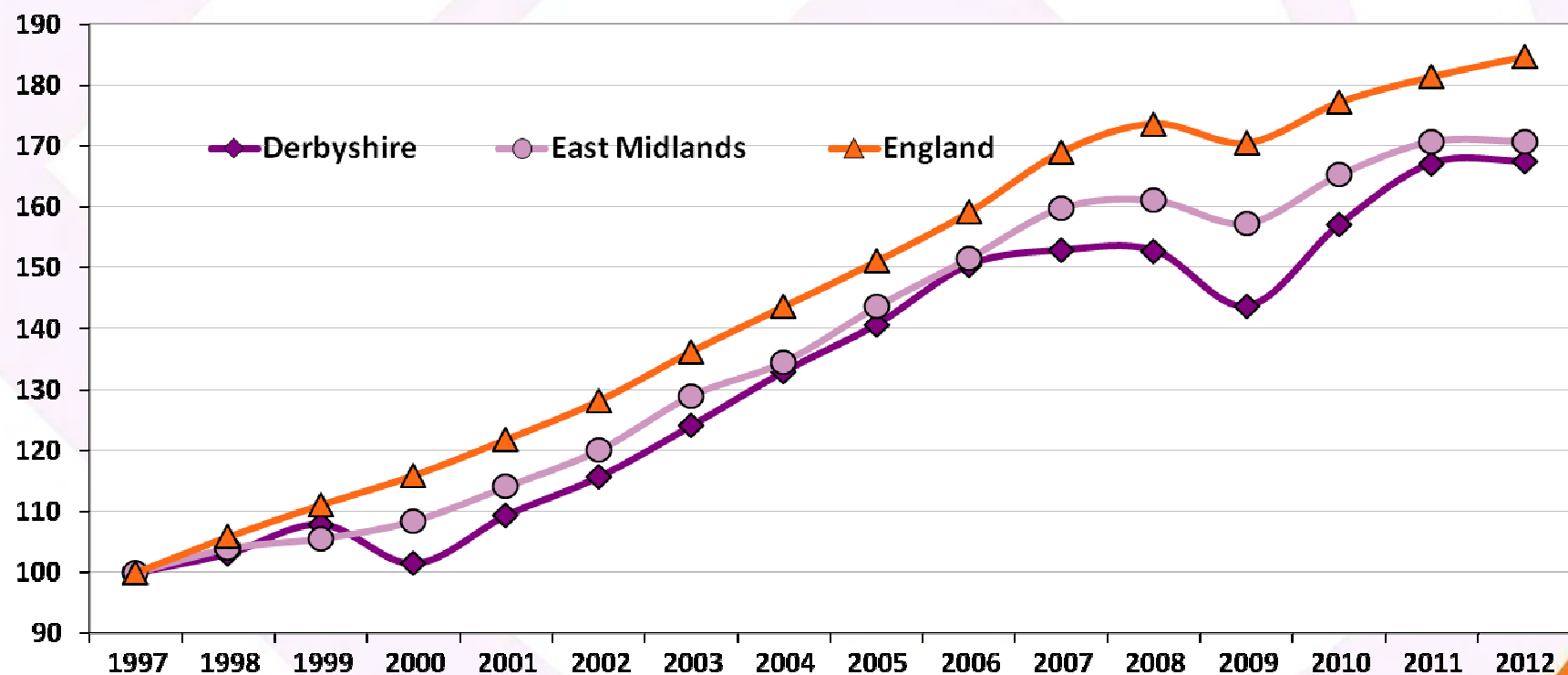
# Claimant Unemployment (%)



# National Sources of Information (2)

- Office for National Statistics (ONS)  
<http://www.ons.gov.uk/ons/index.html>
  - Demographics
  - Census
  - UK Business Activity Size and Location Survey
  - Business Demography
  - NESS - Neighbourhood Statistics
  - GDP/GVA

# Gross Value Added Index



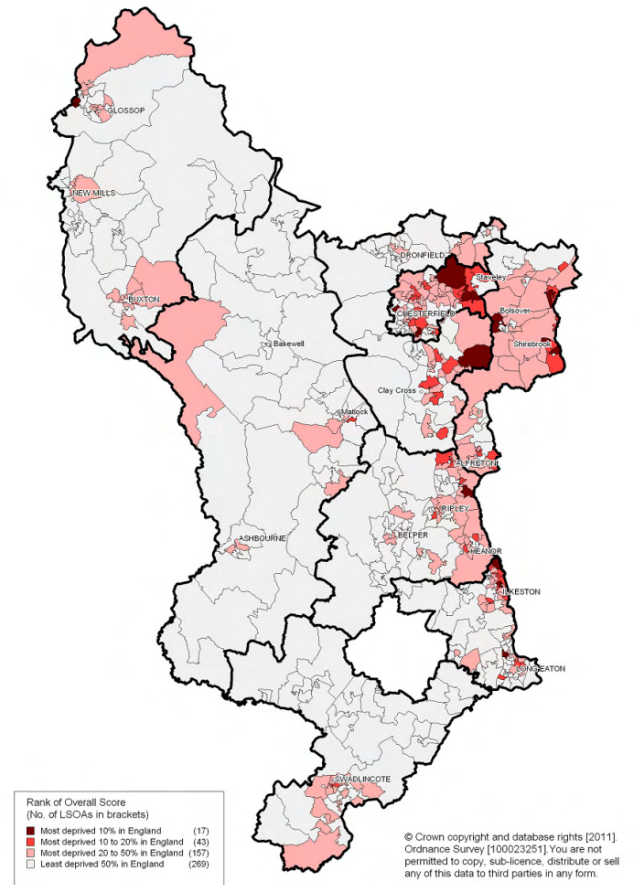


# National Sources of Information (3)

- National Employer Skill Survey  
<https://www.gov.uk/government/statistics/employer-skills-survey-local-data>
- Health and Social Care Information Centre (HSCIC)  
<https://indicators.ic.nhs.uk/webview/>
- Land Registry  
<https://www.gov.uk/government/organisations/land-registry>
- Department for Communities and Local Government  
<https://www.gov.uk/government/organisations/departments-for-communities-and-local-government>

# Deprivation

- Derbyshire is relatively less deprived than England
- Around 3% of Derbyshire's population live in 10% most deprived areas nationally





# Regional Sources of Information

- D2N2 Local Enterprise Partnership  
<http://www.d2n2lep.org/>
- Derbyshire, Nottinghamshire & Leicestershire Chamber of Commerce  
<http://www.dncc.co.uk/>

# Local Sources of Information

- Derbyshire Economic Partnership (DEP)  
<http://www.derbyshireeconomicpartnership.org.uk/>
- Derbyshire Observatory  
<http://observatory.derbyshire.gov.uk/>
- Local Economic Reports and Profiles

## **The Derbyshire economy.....**

- Traditionally seen as relatively low skilled, low wage
- Greater employment in manufacturing and the public sector
- Lower unemployment
- Lower business start-ups/higher business survival
- Lower productivity
- Ageing population
- Lower house prices





You are here: [Home](#)

[Log In](#) Text size: [A](#) [A](#) [A](#)

## Menu

[Home](#)  
[Data by theme](#)  
[Area Profiles](#)  
[Search](#)  
[Document Library](#)  
[Help](#)

## Data for your area

Type your postcode below to  
get data for your local area

## Welcome to the Derbyshire Observatory

This website provides an overview of Derbyshire on a range of social, health, economic, crime and environmental indicators. The indicators are grouped under ten quality-of-life themes. Together they build a picture of life in the county and help to identify where improvements are needed.

### Explore the Observatory by theme



### Documents and additional resources



## News

- 18 September 2014  
[Monthly Unemployment Statistics - August 2014](#)
  - 14 August 2014  
[Quarterly Benefits Data released - February 2014](#)
  - 14 August 2014  
[Monthly Unemployment Statistics - July 2014](#)
  - 14 August 2014  
[Monthly Unemployment Statistics - June 2014](#)
  - 29 July 2014  
[2011 Census Atlas of Derbyshire](#)
- [More news...](#)

## Have your say

[We are looking to improve the Derbyshire Observatory, please take a few moments to complete our survey and let us know what you think about the current site and how we could do things better.](#)

[Accessibility](#) - [Site Map](#) - [Legal](#) - [Feedback](#) - [About](#)

# Educational Attainment >> Key stage 4 pupils achieving 5+ A\*-C GCSEs inc. English and Maths (% of pupils) >> 2013

Derbyshire  
Observatory

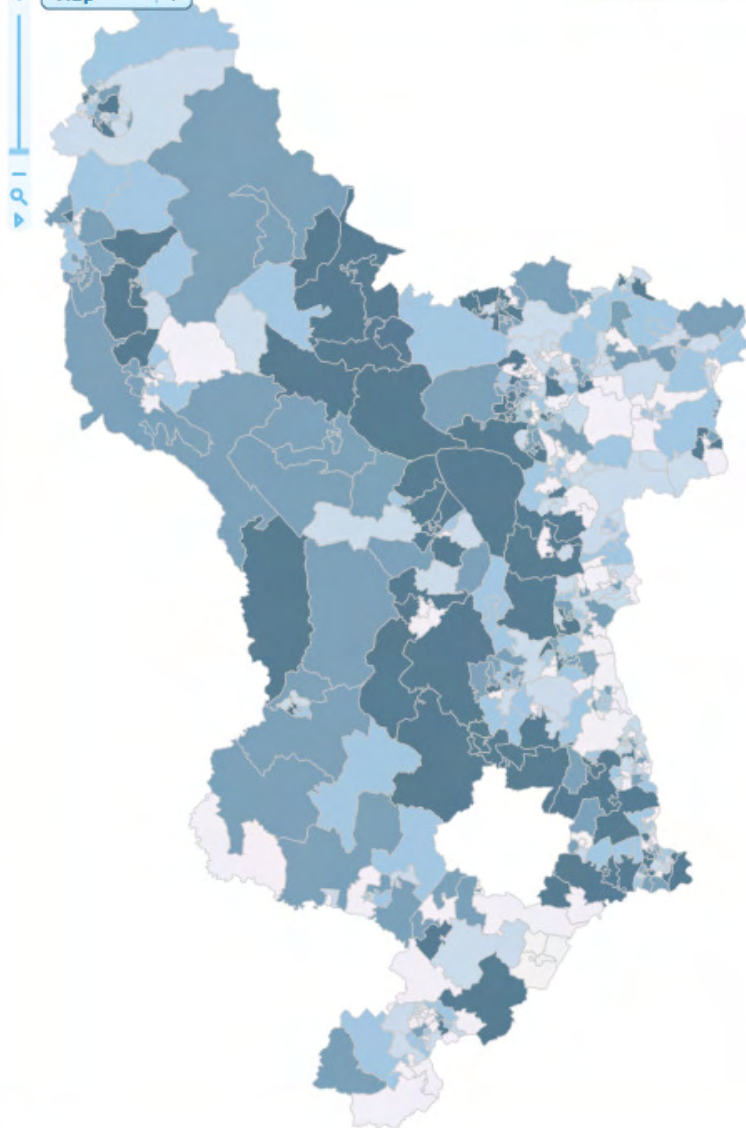
Data

Toggle time-series

Print

Help

Map © Copyright 100023251



	Name	Indicator	Count
	AlfretonNE(MeadowLaneIndEst/MansfieldRd)	21.4	
	AlfretonCentre(HighSt/ChesterfieldRd)	46.7	
	AlfretonSE(Addison Dr/FloweryLeysLane)	66.7	
	AlfretonS(EllesmereAve/NorthSt/TheGreen)	47.4	
	AlfretonSW(DerbyRd/AlfredSt/MortimerWilsonSch)	55.6	
	ShottleAndPostern/Alderwasley/Ashleyhay/IdridgehayA...	82.4	

	Comparator	Indicator	Count
	Derbyshire	59.1	
	East Midlands	59.3	
	England	59.2	

☒ Lower Super Output Area

0.0 - 45.1

45.2 - 55.0

55.1 - 64.9

65.0 - 75.0

75.1 - 100.0

No Data

☐ Districts

☐ Background Mapping

## Title:

Educational attainment - Key stage 4 pupils achieving 5+ A\*-C GCSEs inc. English and Maths (% of pupils)

## Description:

Percentage of key stage 4 pupils achieving 5+ A\*-C GCSEs including English and Maths. As from 2013, the England data is for all schools, whereas prior to 2013 it was for state funded schools only so care should be taken when looking at the time series for the England data. Data for all other geographies and years is for state funded schools only.

## Geographies:





Data

Print

Help

Click on map to select area

Map ▼



Loundsley Green and Newbold

## Legend

- ☒ Derbyshire County Electoral Divisions
- ☐ Derbyshire Districts
- ☐ Google Maps

## Further Information about the Area

Indicator Definition: Proportion of households deprived in 2 or more dimensions of deprivation (% of households). Description: Proportion of households deprived in 2 or more dimensions of deprivation, 2011 Census, Office for National Statistics,, Table: QS119EW Households by Deprivation

## Derbyshire Electoral Division Area Profile 2014

Indicator	Value	Trend	Worst	Performance:	Best
▼ People & place					
Deprivation (%)	29.3	×	40.9		13.4
Children in poverty (%)	17.5	↓	33.1		3.6
Resident satisfaction with local area (%)	100	×	50		100
Library Users (%)	24	×	2.07		31.84
Registered for free school meals (%)	14.7	↓	33.6		8.2 3.5
Pupils with statement of SEN (%)	1.5	↓	3.23		1.06
Children in care (%)	No Data	—	3.40		113.4
▼ Community Safety					
All road traffic casualties (%)	10	↑	42.63		4.46
Anti social behaviour (calls for service)	35.8	↑	161.8		15.2
Violent crime (/1000)	6.7	↓	35.7		1.9
Total crime (/1000)	38.1	↓	16.2		187.8
Youth offending - first time entrants (/100,000)	283		1,032.7		0
▼ Economy					
Economically active (available to work) (%)	66.7	×	63.41		78.10
Not in education/ employment/ training (%)	3.9	×	11.30		0.99
Out of work benefit claimants (%)	14.5	↓	19.2		4.17
Unemployment rate (overall) (%)	3	↑	5.49		0.77
Youth unemployment (%)	5.2	↑	8.86		0
Long-term unemployment (%)	36.6	↓	41.18		0
▼ Education					
Adults with a degree (%)	21.8	×	9.8		40.0
Adults with no qualifications (%)	25.7	×	40.18		14.48
GCSEs (5+ A*-C inc. Eng & Maths) (%)	62.2	↓	35.5		82.9
Foundation stage pupils achieving 78+ (%)	44.9	×	34.05		69.79

Loundsley Green and Newbold

■ Loundsley Green and Newbold

Derbyshire Average: Sig. better ● Not sig. different ● Sig. worse ● Comparison to 2013 Area Profile: Better ↑ Worse ↓ Same — No data ×

Region | England | County |

25 50 75 100

— +



## Derbyshire Observatory

*Data and statistics for Derbyshire*

[Home](#) | [Explore Topics](#) | [Explore Profiles](#) | [Data and documents](#) |

[Log In](#) | Text size: [A](#) [A](#) [A](#)

### Welcome to the **Derbyshire Observatory**

Welcome to the Derbyshire Observatory where you can find the latest data and statistics for the county. Please pick a subject from the menu above to explore the latest information..

This site is best viewed in Google

#### Register for updates

Name

Type your user name here

Type your email

**Subscribe**

Can't find what you need?

**Contact us**



0 0 0 0

The latest unemployment statistics for Derbyshire show that unemployment has fallen to 1.8%. Read the monthly unemployment bulletin for July 2014 to find out more.

#### Unemployment down to 1.8% in July 2014



Read our newly released Census Profiles which provides data and information for different areas and communities in Derbyshire.

#### Census profiles provide community level data

0 0 0 0

Take a look at the **blog** >>>

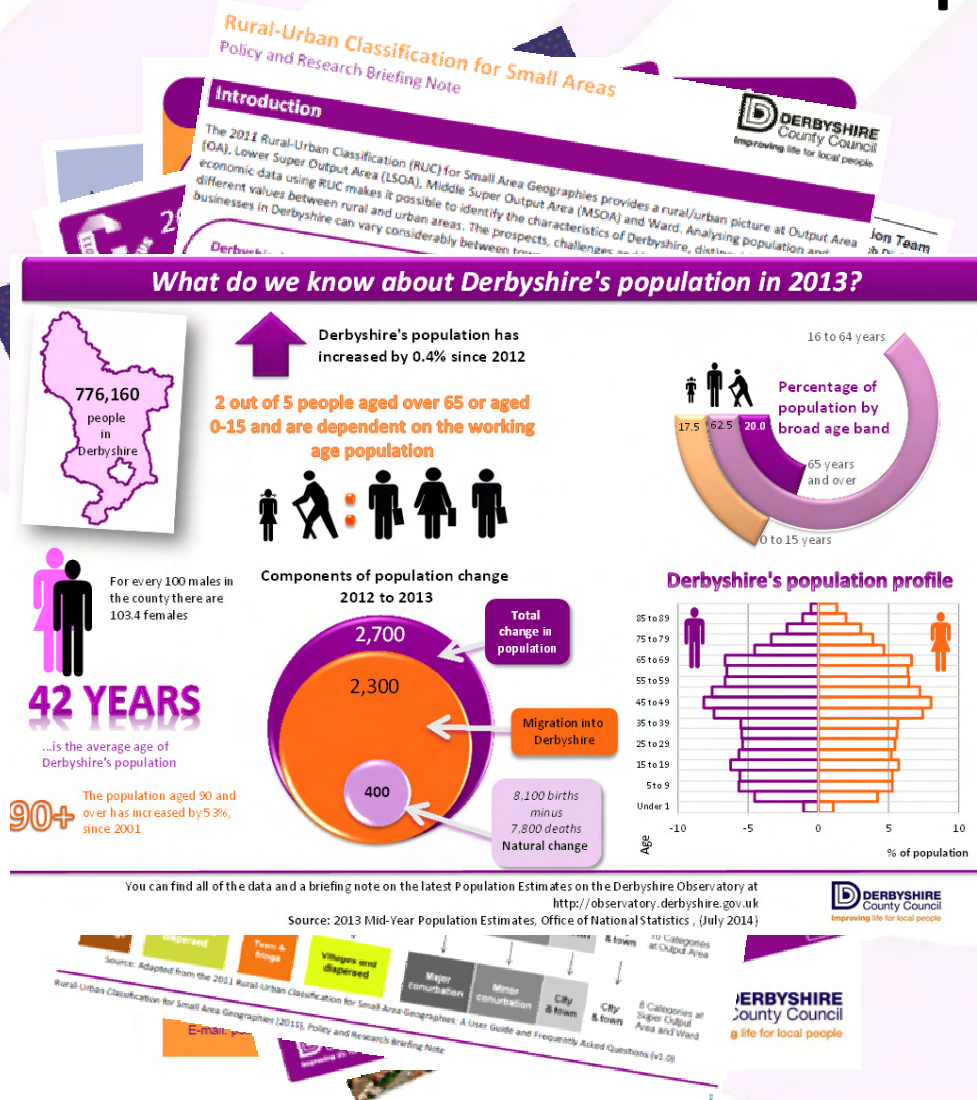
The latest blog post takes a look at how the health of Derbyshire compares to other areas of the country. It compares different age groups and genders...

[Accessibility](#) | [Site Map](#) | [Legal](#) | [Feedback](#) | [About](#) | [Help](#)



# DCC Economic Reports and Profiles

- Quarterly Economic Review
- Local Economic Assessment
- Unemployment Bulletin
- Area Profiles
- Policy Briefings
- Census Profiles
- Briefing Notes



# Contact Us

Melanie Turvey

[mel.turvey@derbyshire.gov.uk](mailto:mel.turvey@derbyshire.gov.uk)

01629 539167

Mick Evans

[michael.evans@derbyshire.gov.uk](mailto:michael.evans@derbyshire.gov.uk)

01629 538474