



Building Better Opportunities

June 2015

Sean Tizzard

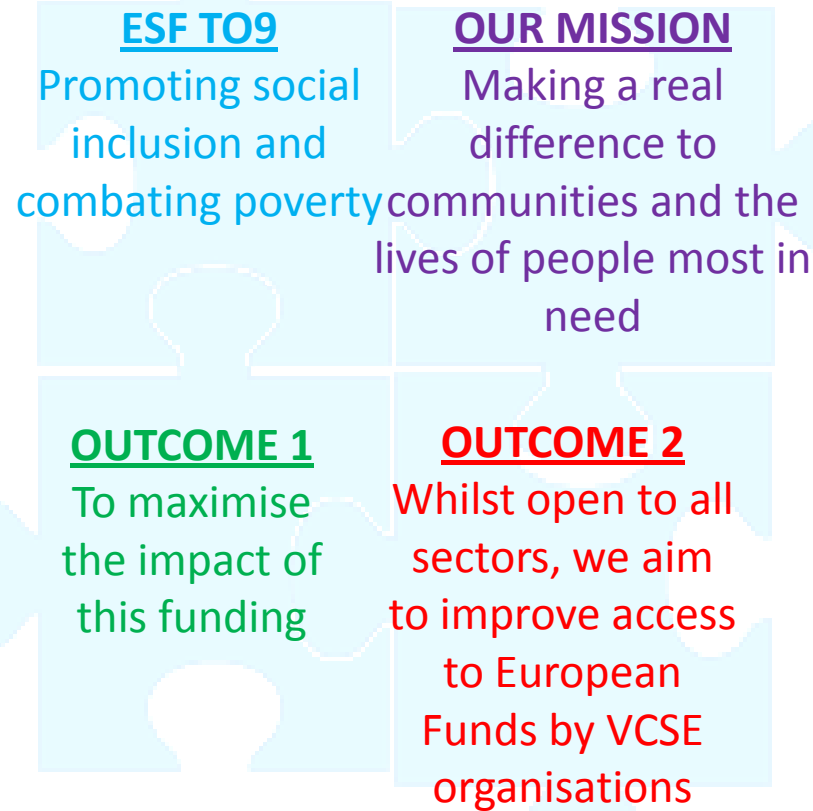
Introduction



1. Why BBO?
2. Role of the ESIF Committee
3. Key Messages
4. Building Better Opportunities xxx LEP Area
5. The Big Lottery Fund's Opt In Offer
6. The Application Process
7. Next Steps
8. Questions and Answer

Why BBO?

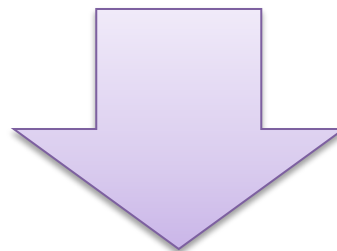
Overall Vision for BBO



Role of the LEP Area ESIF Sub Committee



**LEP AREA ESIF
SUB COMMITTEE**



ADVICE ON STRATEGIC FIT

Key messages



- BBO is now live.
- 37 Local Enterprise Partnership (LEP) areas are expected to opt in.
- 71 projects in 25 LEP areas are now open for application.
- £300m investment over 3 years to tackle poverty and promote social inclusion.

Support to applicants



- Baker Tilly/Ecorys are offering support and advice regards monitoring and reporting requirements.
- www.bboesfsupport.com

Programme Development Funding



- £950k across 36 LEP areas
- 3 objectives;
 - Awareness
 - Administrative support
 - Contact

The Big Lottery Opt In Offer

A Summary



1. Supporting those furthest from the labour market
2. Actual costs
3. Grants, not contracts

The Fund's Opt In Offer

Different application windows



**Timescales
appropriate to
the projects not
projects to the
timescales**

The Fund's Opt In Offer

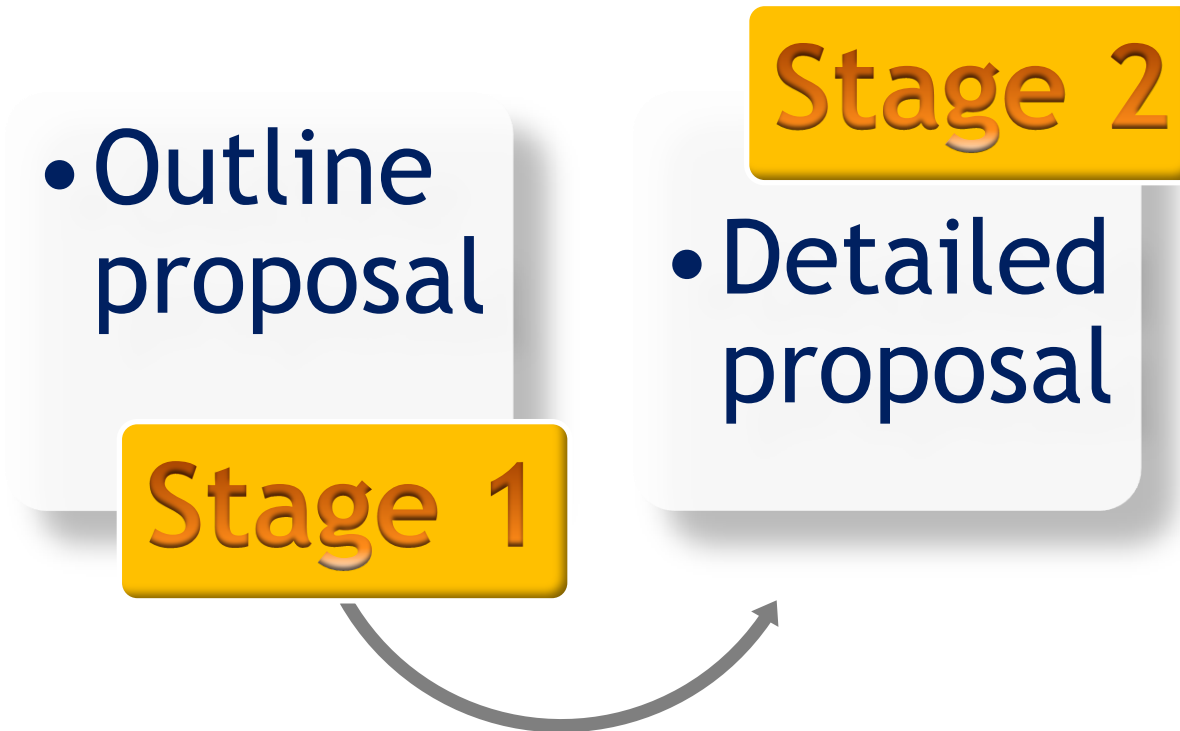
Simplified monitoring



**Standardised
tools, processes
and systems**

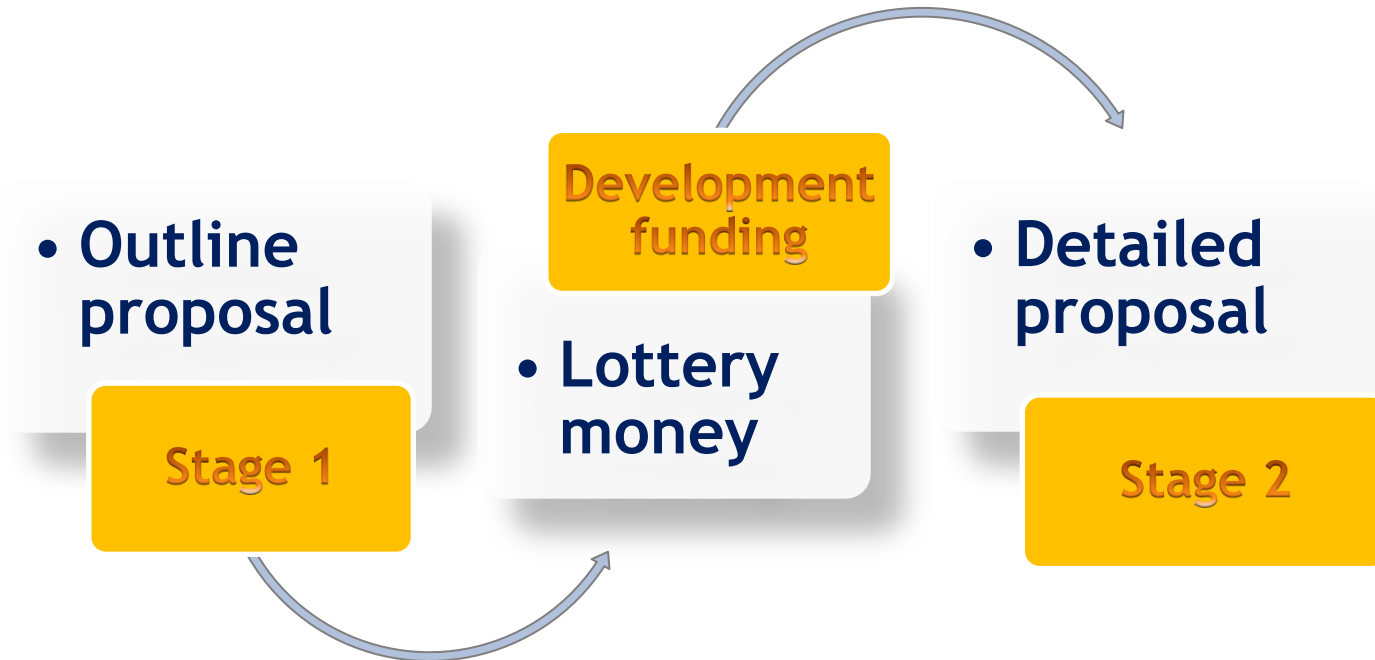
Application Process

2-stage competitive grants process



Application Process

Big Lottery development grants



Evaluation



- Access
- Impact

Tranche 1 Key dates



- June/July 2015 - Stage 1 Application
- August/September - Stage 1 Assessment
- October - Stage 1 Decision Making
- November/December - Stage 2 Application
- January/February 2016 - Stage 2 Assessment (there are multiple deadlines for the applicant to choose from, this is the earliest)
- March - Stage 2 Earliest decisions and award

* All dates are subject to minor change.



Tranche 2 Key dates



- October/November 2015 - Stage 1 Application
- December/January 2016/February (to include Christmas break) - Stage 1 Assessment
- March - Stage 1 Decision Making
- March/April - Stage 2 Application
- May/ June- Stage 2 Assessment (there are multiple deadlines for the applicant to choose from, this is the earliest)
- July - Stage 2 Earliest decisions and award



* All dates are subject to minor change.

Next Steps



1. Development of Tranche 2 project outlines.
2. BBO application process for tranche 1 projects.

Feedback and Questions



Further information



www.biglotteryfund.org.uk/esf

Building.BetterOpportunities@BigLotteryFund.org.uk

www.bboesfsupport.com