

Building Better Opportunities



The Building Better Opportunities Commitment

Building Better Opportunities (BBO) brings together funding from the National Lottery Community Fund and the European Social Fund (ESF) to help tackle the poverty and social exclusion faced by the most disadvantaged people in England. Enabled VCS involvement in European funding delivery.

Nationally, projects target different areas or groups of people, but there are five principles that underpin them all:

- Help the most disadvantaged
- Tackle social exclusion
- Be focused on capabilities of each individual
- Led to better co-ordinated services
- Create new opportunities for work

The D2N2 offer

In our LEP area, the BBO projects provides support to participants on the following areas:

- Financial literacy/Inclusion – Money Sorted in D2N2 – St Ann’s Advice Centre
- Multiple and Complex Needs – Opportunity and Change – Framework Housing Association
- Employability and Skills – Towards Work – Groundwork Greater Nottingham

All projects improve employability and enhance access to services

Projects cover all of D2N2 (Derbyshire, Derby City, Nottinghamshire, Nottingham City)

£15m combined project total

Duration: 3.5 years - until April 2020 (extended from October 2019)

Why is BBO different?

- > Personalised one to one support
- > Long term intervention
- > Personal budget to remove significant barriers
- > Most complex people reached
- > Significant geographical reach made possible through VCS and local networking across remote areas
- > Stabilising and removing initial complexities
- > Progression into other provision once initial support has been accessed – enabling more people to consider employment as an option

Who is benefitting from support?

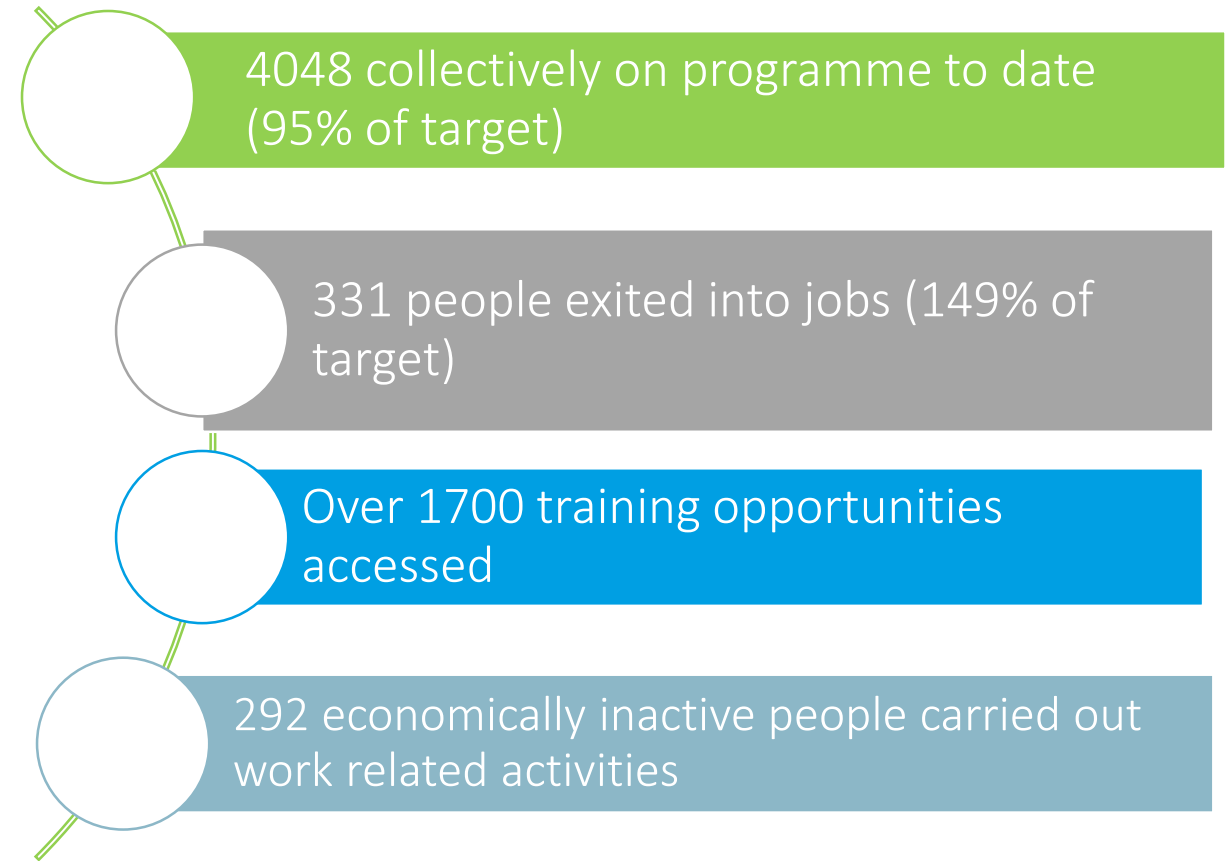
The Building Better Opportunities cohort:

- > 4048 on programme
- > 2362 (58%) have a disability of some form and/or health condition (target 20%)
- > At least 1321 (32%) are economically inactive (true figure higher)
- > 45% of participants are female
- > 24% are aged over 50

Successes to date

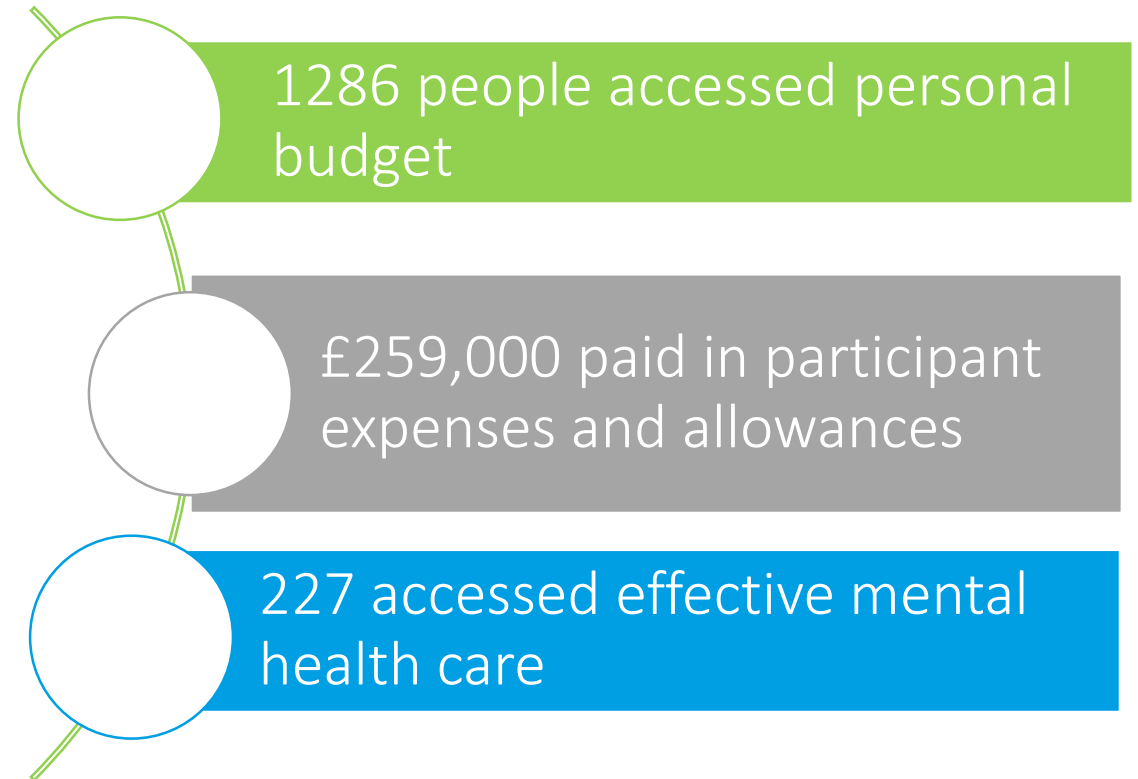
Moving people on

- > Supporting those socially excluded and furthest removed
- > Removing barriers and getting people closer to end destination
- > Time and resource to make initial steps and further progress – huge steps for our cohort
- > Results continue to grow as progression routes establish. Employment targets overachieved as we support people longer within their journey



Wider benefits

- > Net overall economic impact to the D2N2 area of £2.8 m for Towards Work
- > Toyndee Hall social policy work link
- > 181 participants accessing stable accommodation



Integration into other services

- Stakeholder Managers employed by the four top tier Local Authorities
- Ensure alignment and reduce duplication across initiatives
- Meeting most deprived needs matched to the LA priority areas
- Embedded and linked to other wider strategic plans of the LA
- Recruiting Talent Event July 2019 – promoting inclusive employment
- Link to all LA departments, data sharing agreements in place with Derbyshire County Council and developing for Nottinghamshire County Council
- Links with disability teams, adult social care and other departments to meet collective aims to support individuals to move on

Common issues

- > Framework and structure of reporting doesn't tell the full picture of our success - so much more than jobs and training
- > Achieving job search as an outcome has been a challenge. Participants are supported for longer with job search as a milestone rather than a point of exit.
- > PFA need a platform to share the narrative and up to date data to show true picture and success of our projects – one quarter behind for official figures from DWP
- > Level of support need and complexities – Crisis points and complex needs require to be dealt with first
- > Single projects trying to work as one, amidst the funding restrictions out of our control. Recent communication could change this for round 2
- > Lack of clear and consistent guidance has been challenging – this is now settling down as the programme is more established nationally
- > Part of national evaluation carried out by Ecorys – learning from individual evaluation projects in line with national findings and common issues

The difference made

- > “I feel like I have the right sort of support and motivation into getting support with recovery and I feel like I am now moving forward.”
- > “BBO restored my strength and self belief. They created a personal action plan which was personal to me. This enabled me to focus on what I needed to do to get where I wanted to be. They recognised that I needed to remain focused and helped me to move forward by taking one step at a time.”
- > “I felt lost after finishing college and over the years I fell into a state of depression. I turned to a family member for help and they introduced me to BBO. The Work Coach actually listened and treated me like an individual. I started to leave the house more and eventually started to volunteer. I would never have imagined myself in a job where I interact with new people on a regular basis but now I help others to overcome the challenges I once faced.”

In summary

- > National Lottery Community Fund are happy with progress and have awarded their element of round 2 funding
- > Significant progress made in the last 6 months and all strands are on track to achieve original project outlines
- > Collective summary of results and outcomes shows significant impact
- > Overly complex systems are now simplified and ready to hit the ground running for round 2

Contact Us:

Penny Halewood, Towards Work

Email: penny.halewood@groundworknottingham.org.uk

Debbie Webster, Money Sorted in D2N2

Email: Debbie.webster@stannsadvice.org.uk

Richard Oskwarek, Opportunity and Change

Email: richard.oskwarek@frameworkha.org