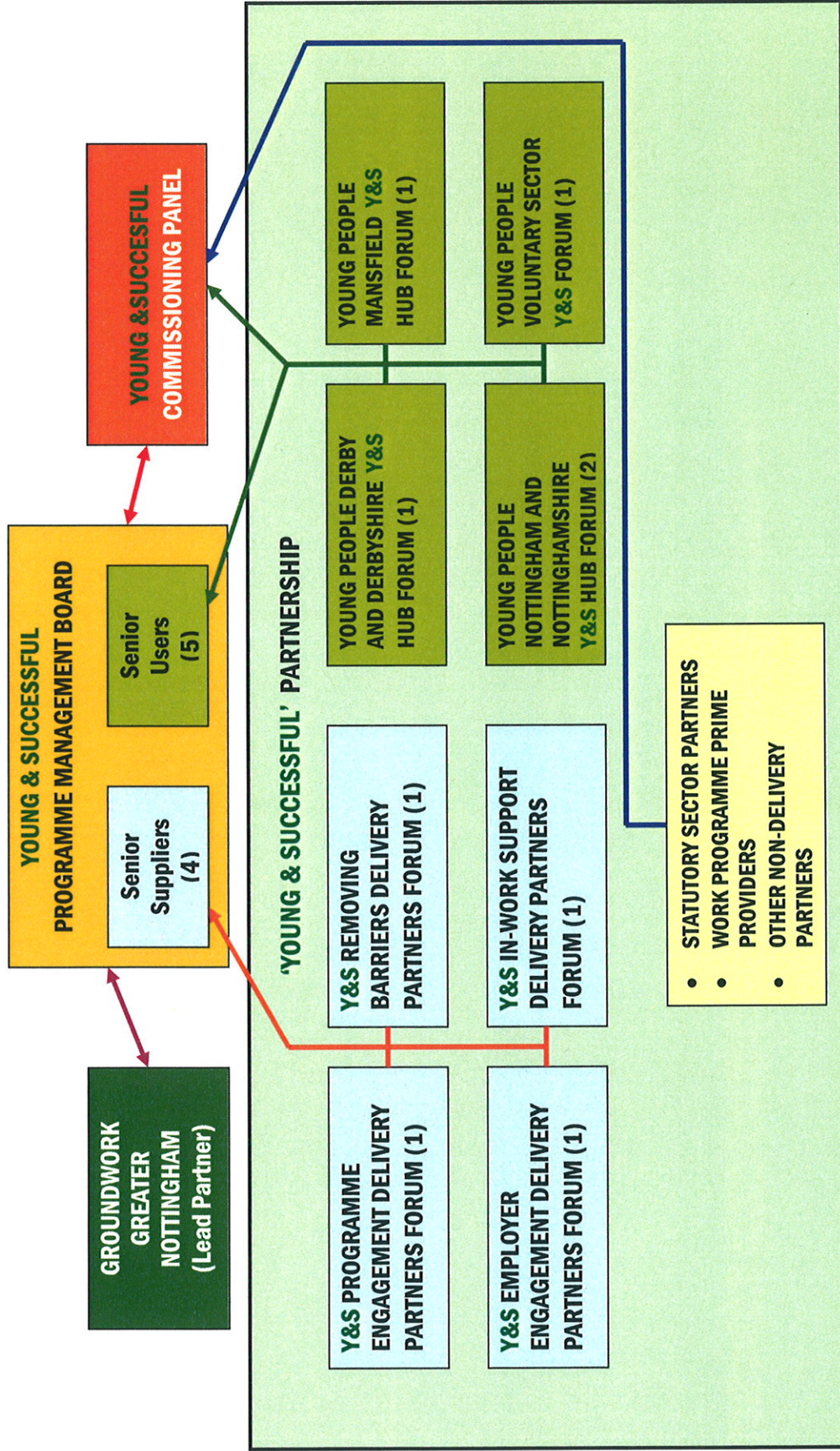


Appendix 1 - 'YOUNG AND SUCCESSFUL' Partnership Structure and Programme Management Model (DRAFT)



- ↑ Non delivery partners appoint representatives into the Commissioning Panel
- ↑ Young People Forums appoint 5 of their representatives onto the Programme Board and Commissioning Panel
- ↑ Delivery Partner Forums appoint 4 of their representatives onto the Programme Board
- ↑ Groundwork Greater Nottingham appoints the Executive member of the Programme Board and Project Manager
- ↑ Commissioning Panel considers services, selects the best provider and instructs GGN to contract